

## **AECL Designed/Built Houses in Deep River**

In 2018 AECL transferred to the Society for the Preservation of Canada's Nuclear Heritage Inc. seventeen Banker Boxes of files that it declared surplus during a clearing out of the J.L. Gray Building.

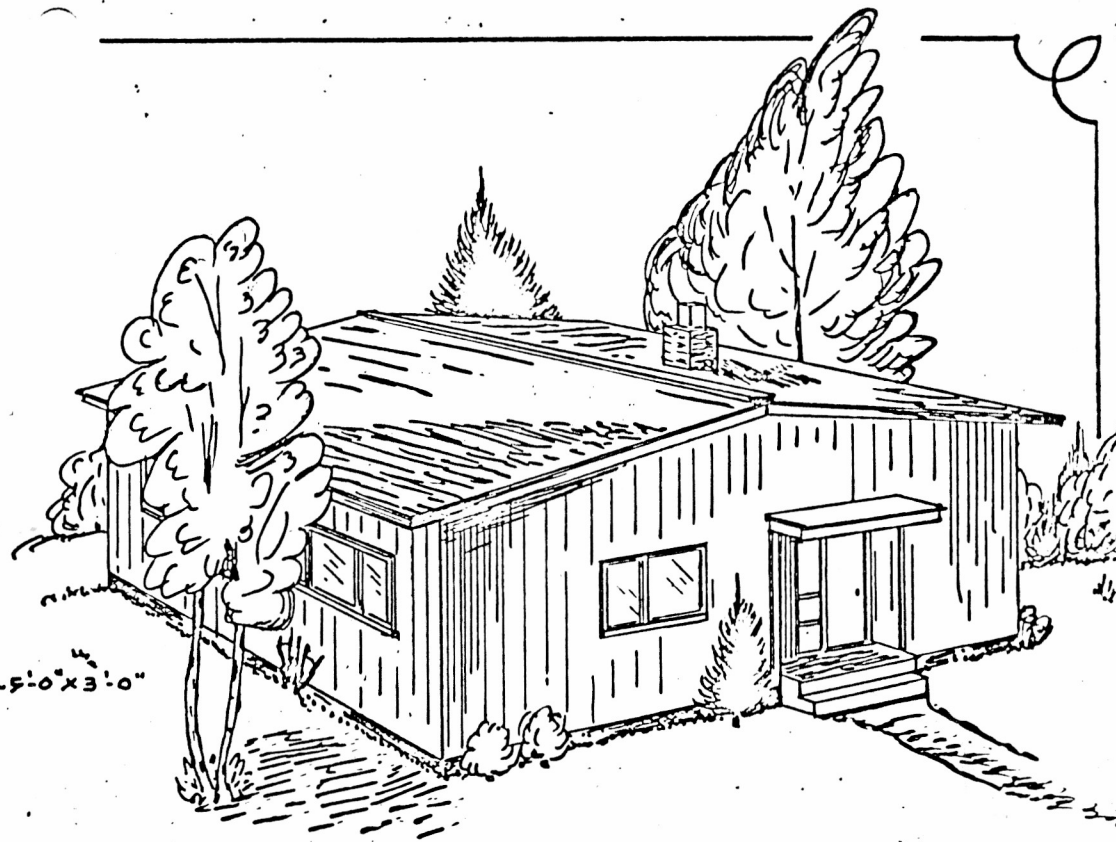
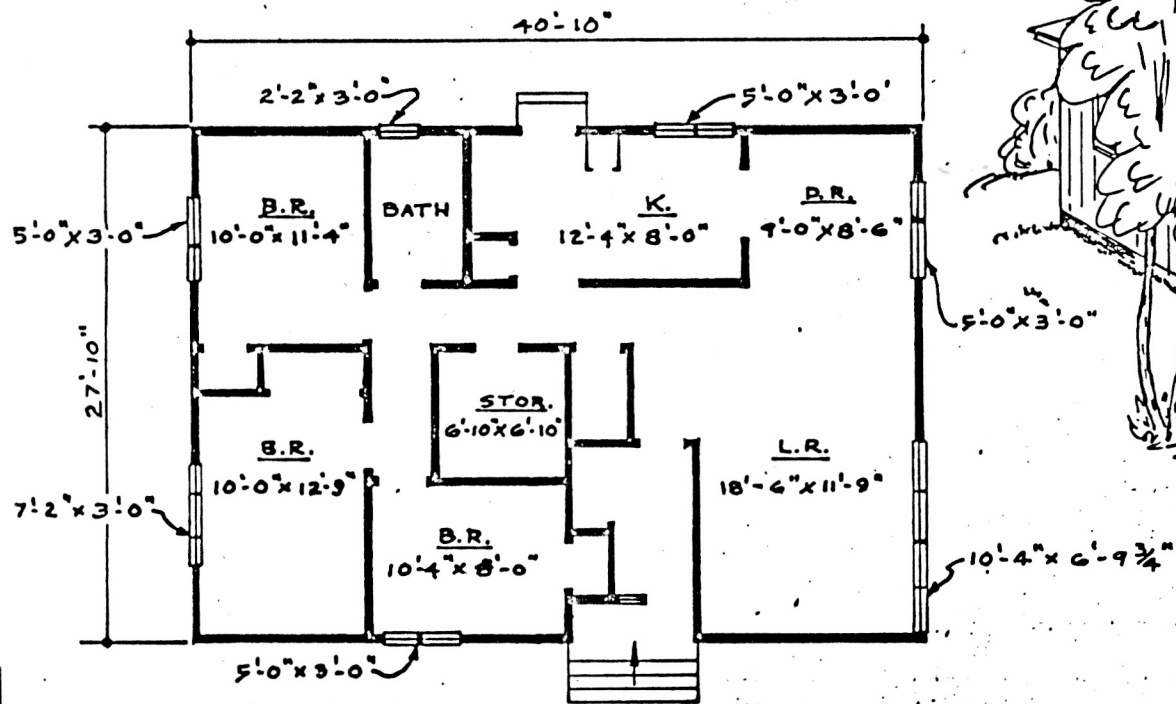
These files contain information about the care, sale and conveyance of lots, houses and other properties in the Town of Deep River. The material was not directly relevant to the direct mission of the Society but it was considered too valuable to shred or burn. As a result, the boxes were simply put into storage in a little used area.

In response to a request for possible information about a particular property, I took a closer look at the files in December 2025. I came across a large file folder in Box 12 that contained floor plans of 40 different house designs of houses that had been built by/for AECL in Deep River. (The file also contained 4 house designs and an apartment block design for the city of Pembroke, but it is not believed AECL built any houses there.)

I scanned all the plans and made a digital copy available to the W.B.. Lewis Library in Deep River on a DVD. The originals are retained in Box 12 at the Canadian Nuclear Heritage Museum.

Jim Ungrin

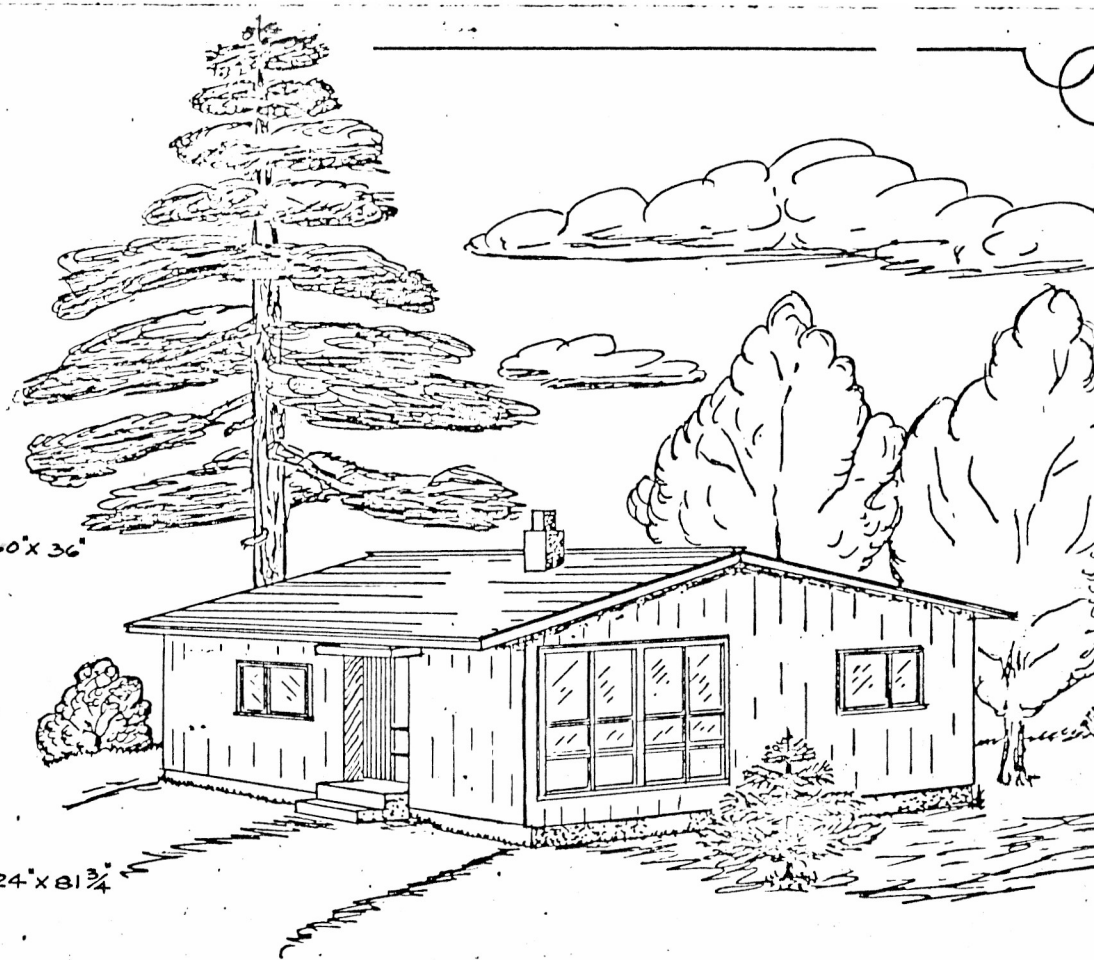
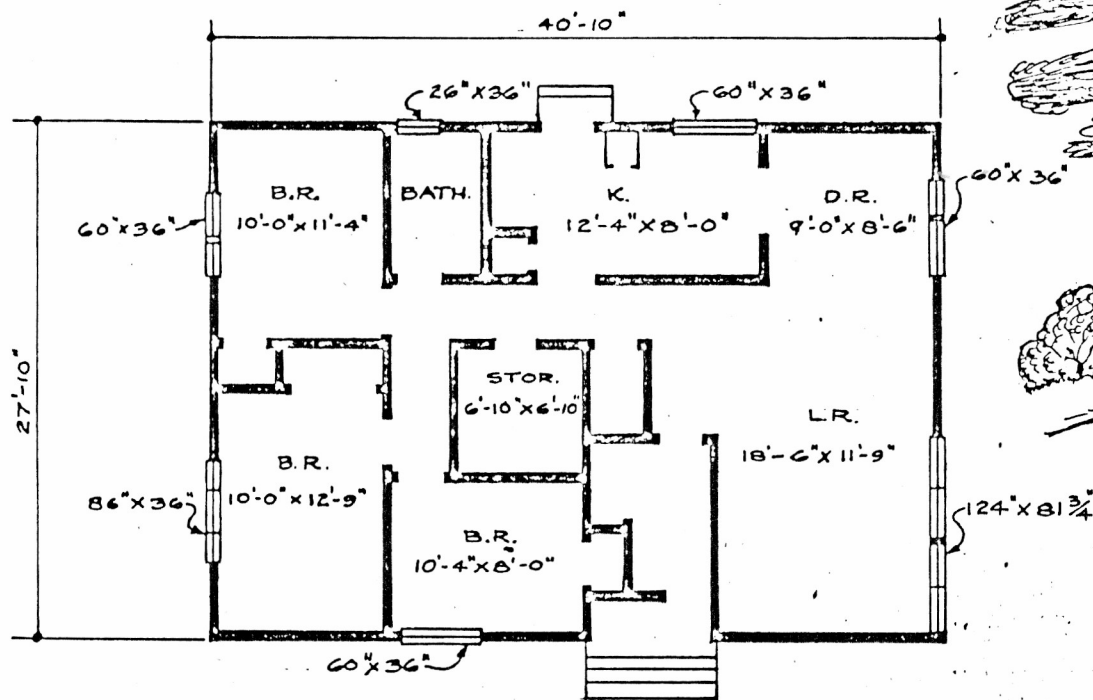
10 December 2025



# TYPE 2 HOUSE

DEEP RIVER-ONT.

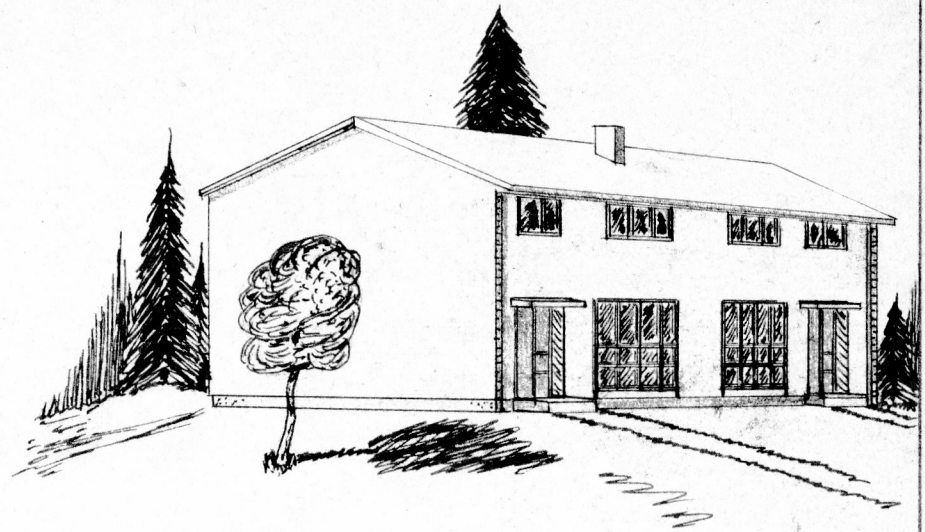
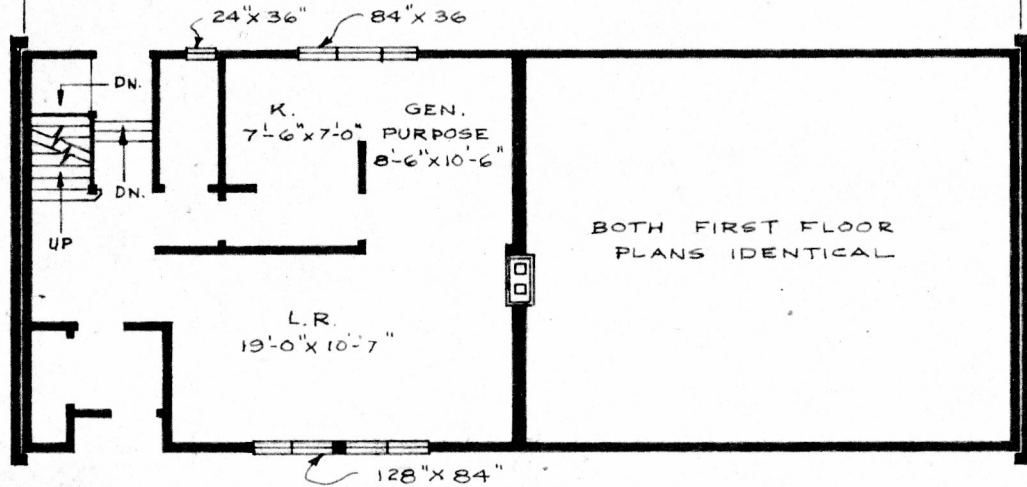
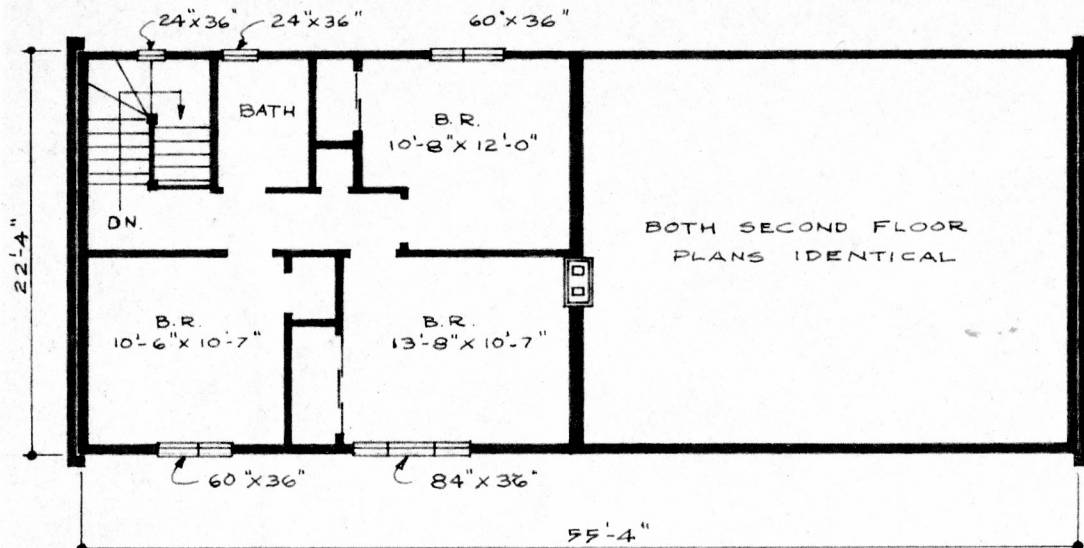
SCALE -  $\frac{3}{32}'' = 1'-0''$



## TYPE 2-A HOUSE

DEEP RIVER-ONT.

SCALE -  $\frac{3}{32}$ " = 1'-0"



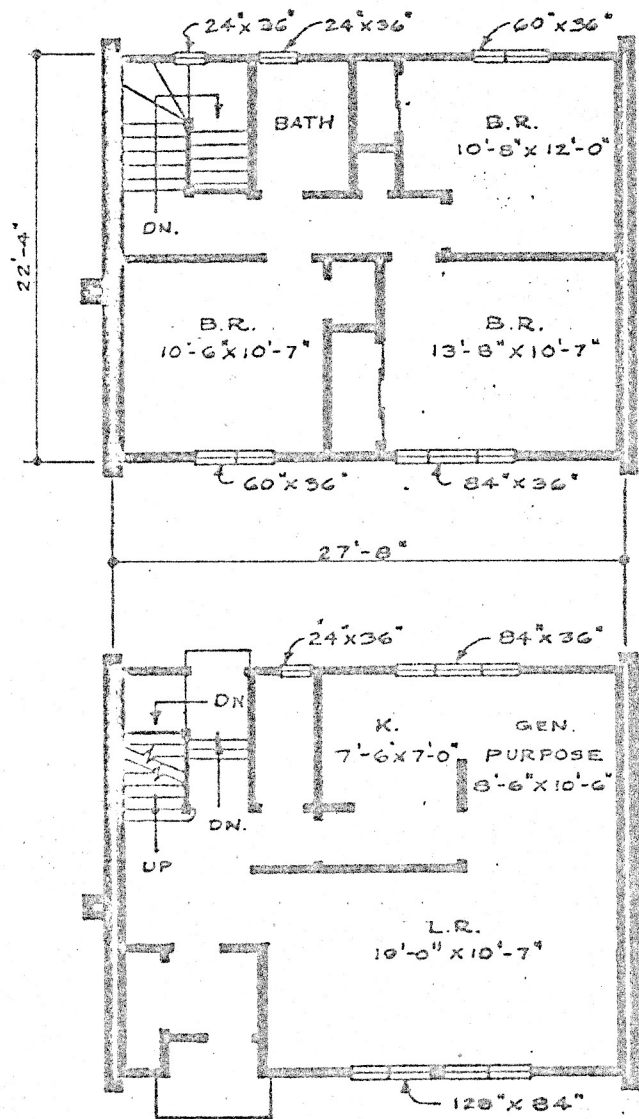
## TYPE 9 HOUSE

DEEP RIVER-ONT.

SCALE -  $\frac{3}{32} = 1'-0''$ .

TYPE 9M

SAME FLOOR PLAN  
DETACHED HOUSE



# TYPE 9M HOUSE

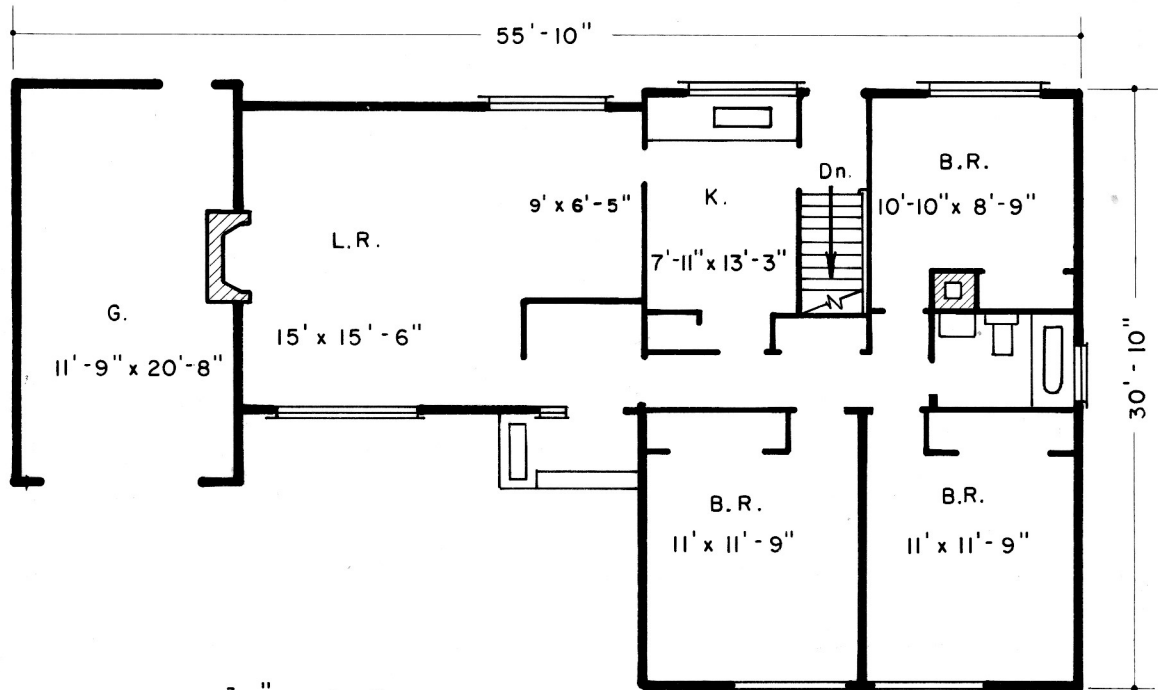
DEEP RIVER, ONT.

SCALE -  $\frac{3}{32} = 1'-0''$



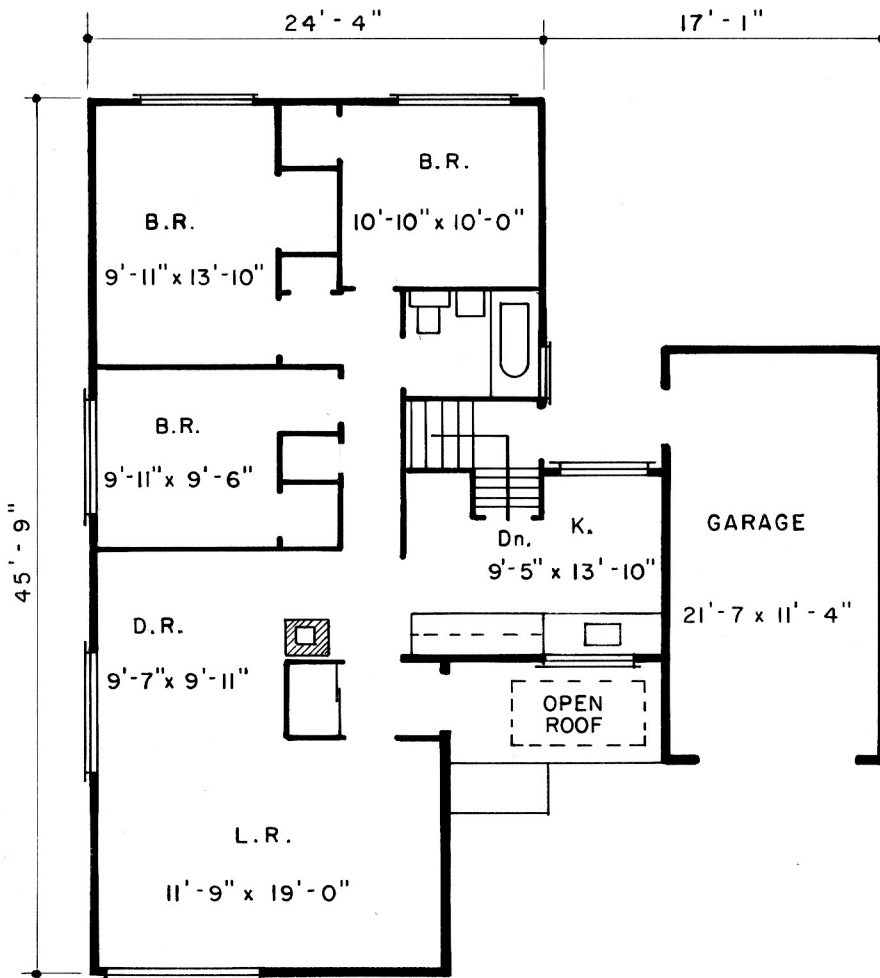
# TYPE 238 HOUSE

DEEP RIVER  
TOWNSITE

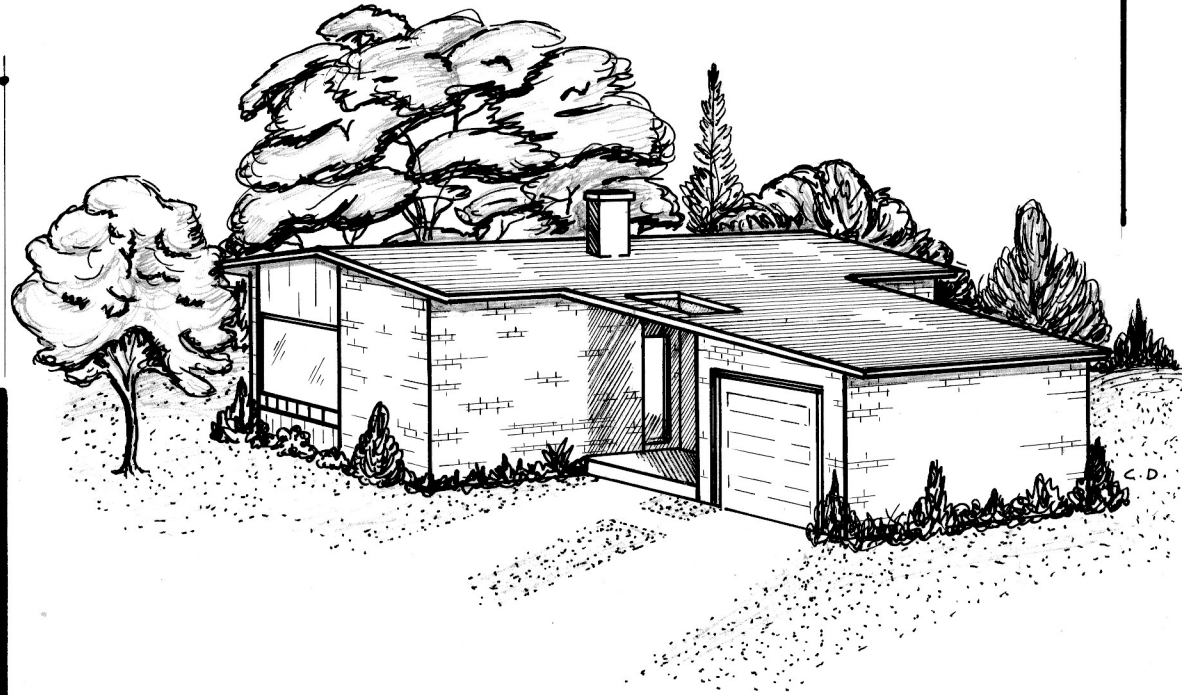


SCALE:  $\frac{3}{32}$ " = 1'-0"

— FULL BASEMENT —



— FULL BASEMENT —



# TYPE 254 HOUSE

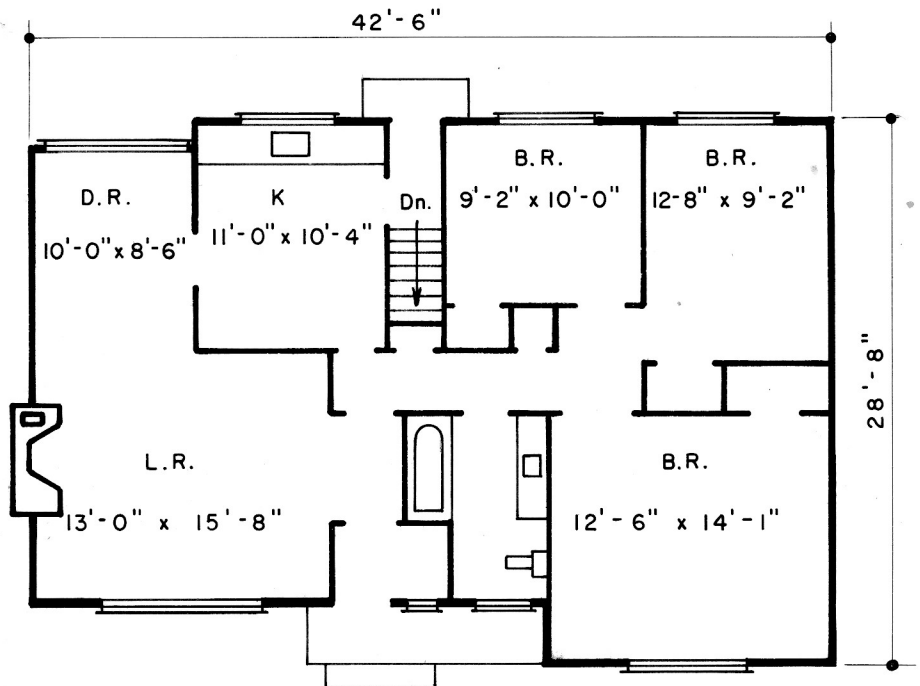
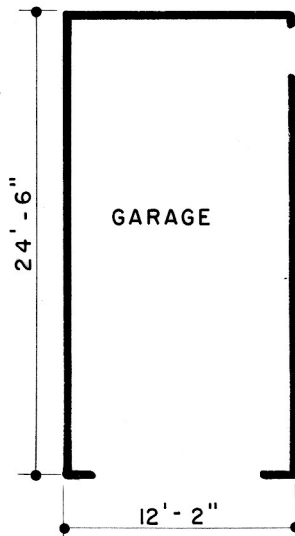
DEEP RIVER  
TOWNSITE

SCALE:  $\frac{3}{32}'' = 1' - 0''$



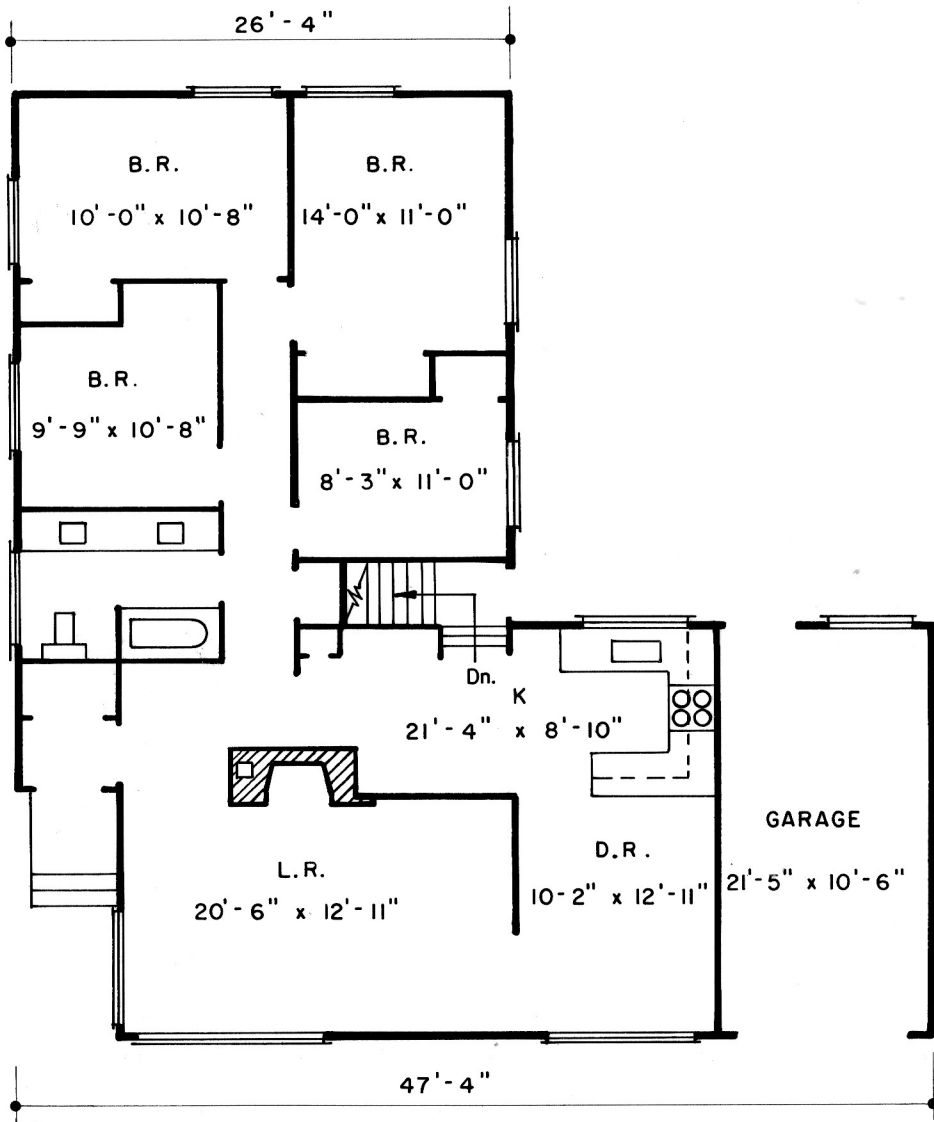
# TYPE 259 HOUSE

DEEP RIVER  
TOWNSITE



SCALE :  $\frac{3}{32}$ " = 1'-0"

— FULL BASEMENT —



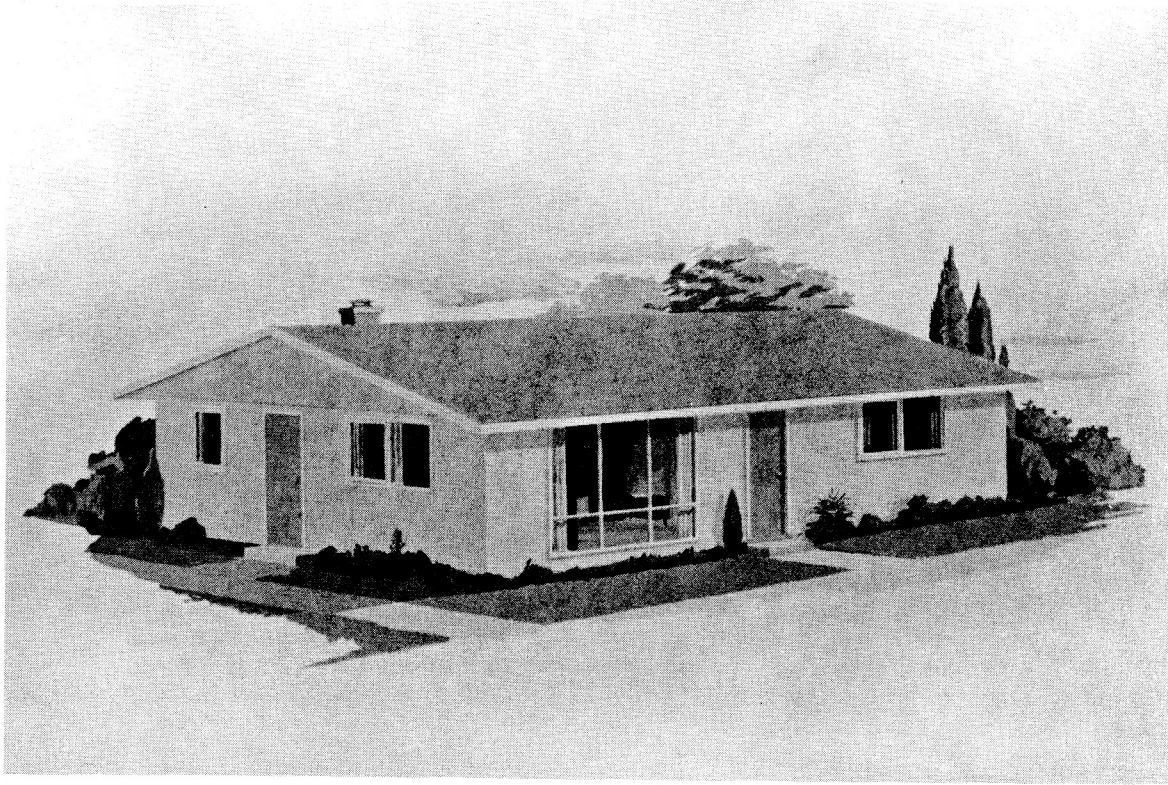
— BASEMENT UNDER FRONT WING ONLY —



# TYPE 801 HOUSE

DEEP RIVER  
TOWNSITE

SCALE :  $\frac{3}{32}$ " = 1' - 0"



**Brad Industries Ltd.**

**House Type 2501**

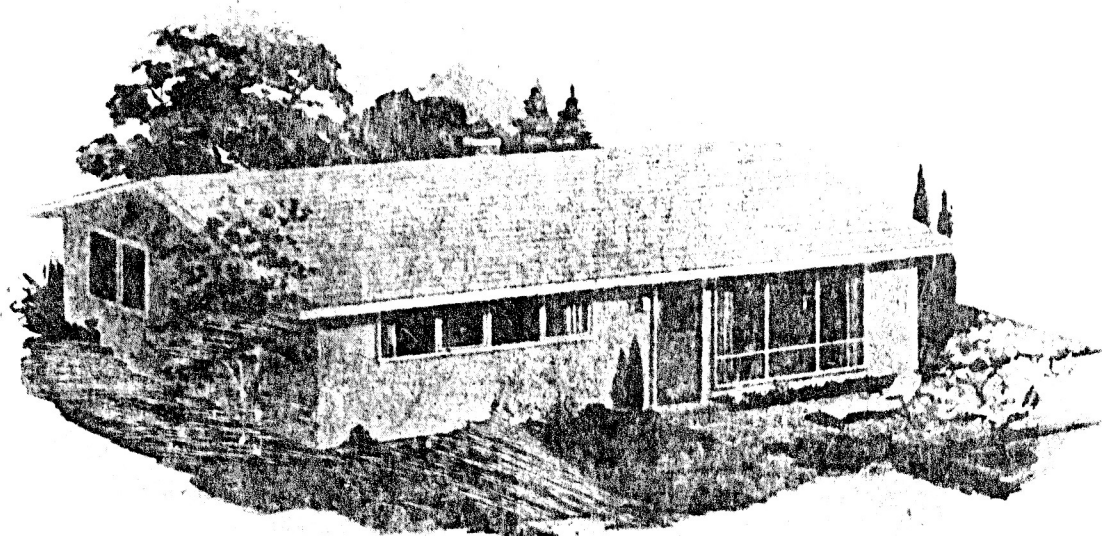
**2-bedroom  
basementless**

**975 sq. ft.**

*Price 11,800  
Rent 81*



82 BEACH

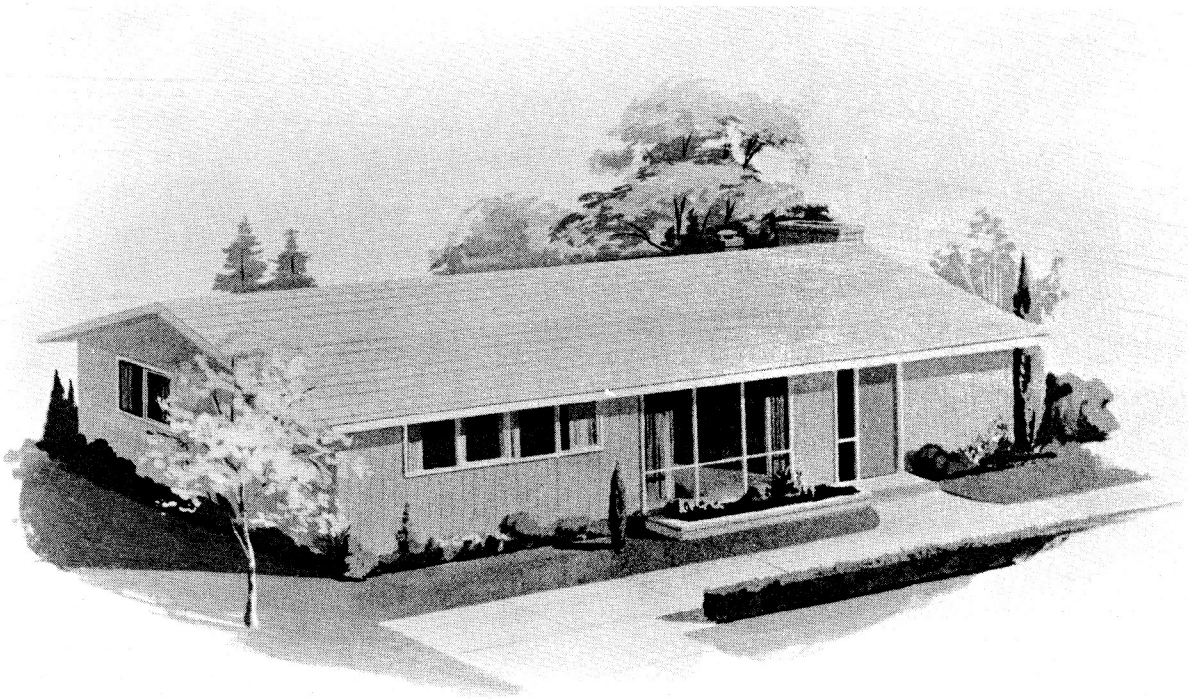


Brad Industries Limited

House Type 3501

3-bedroom basementless  
1,108 square feet





Brad Industries Limited

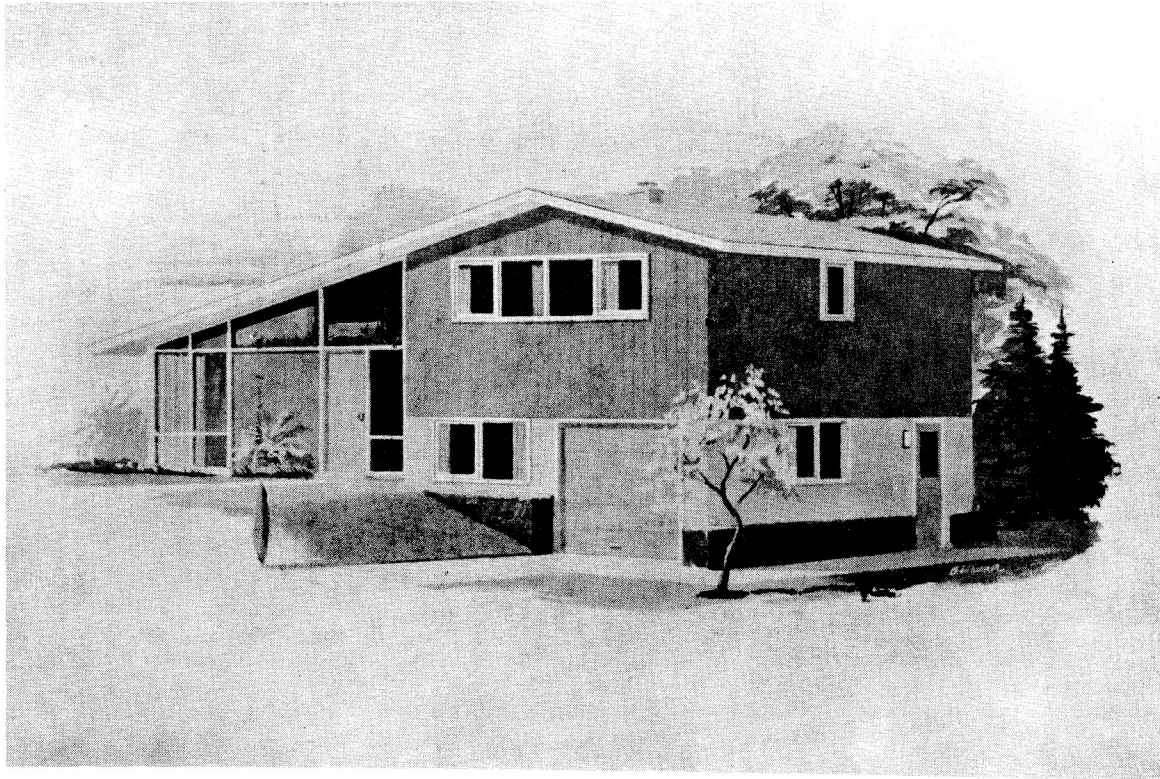
House Type 3502

3-bedroom basementless  
with general room and  
 $1\frac{1}{2}$  bathrooms

1,294 square feet

P14 200  
R 97





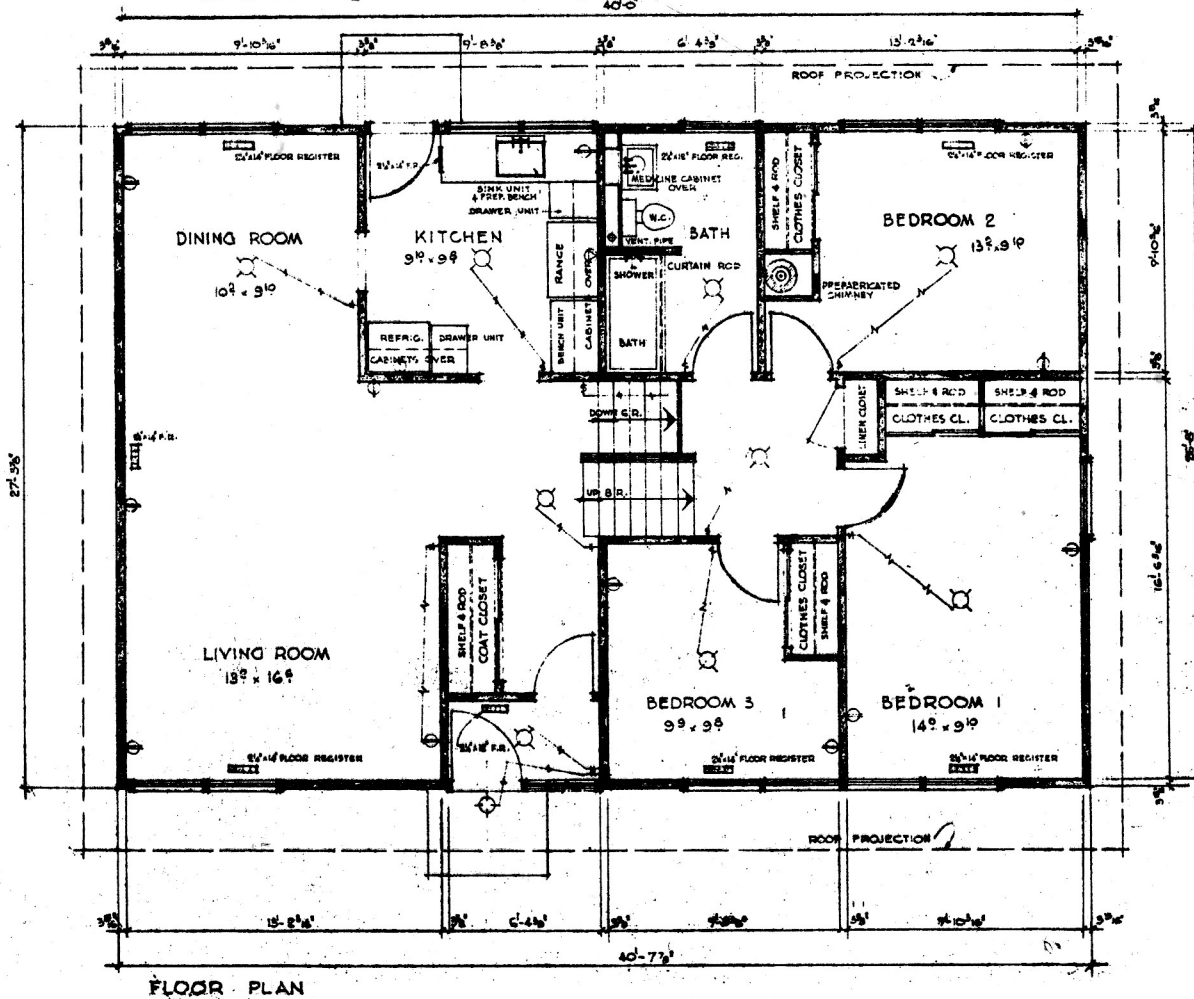
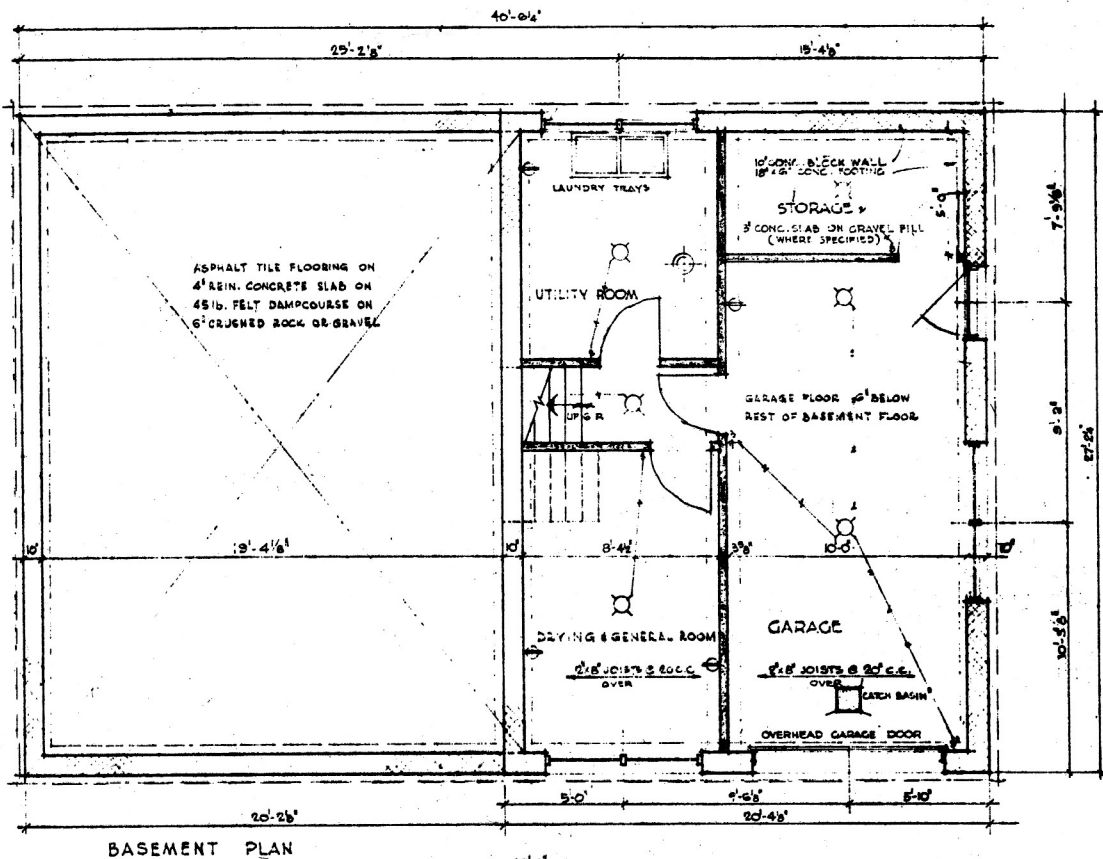
Brad Industries Limited

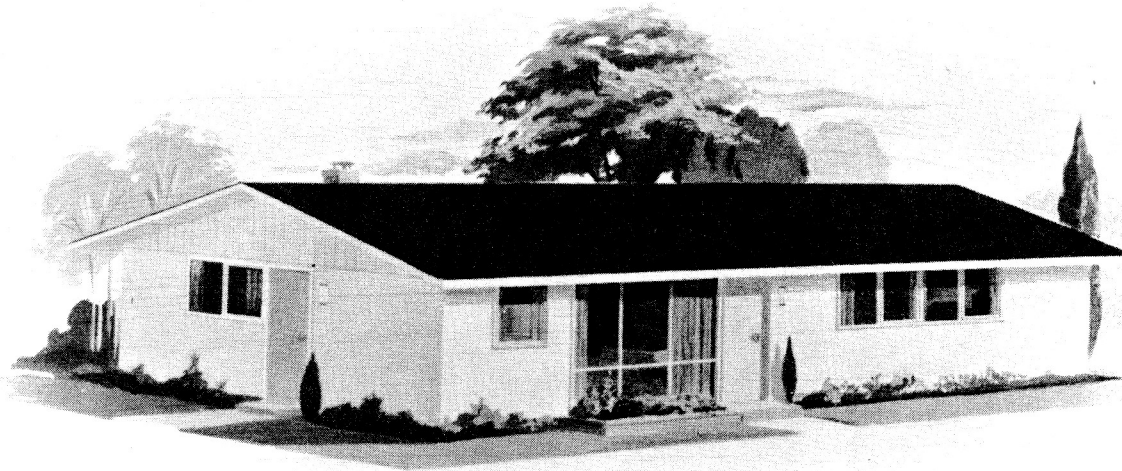
House Type 3701

3-bedroom, split-level  
house with provision  
for playroom

1,108 square feet  
exclusive of garage,  
storage, future  
playroom and utilities

*Price 15000  
Plan 102*





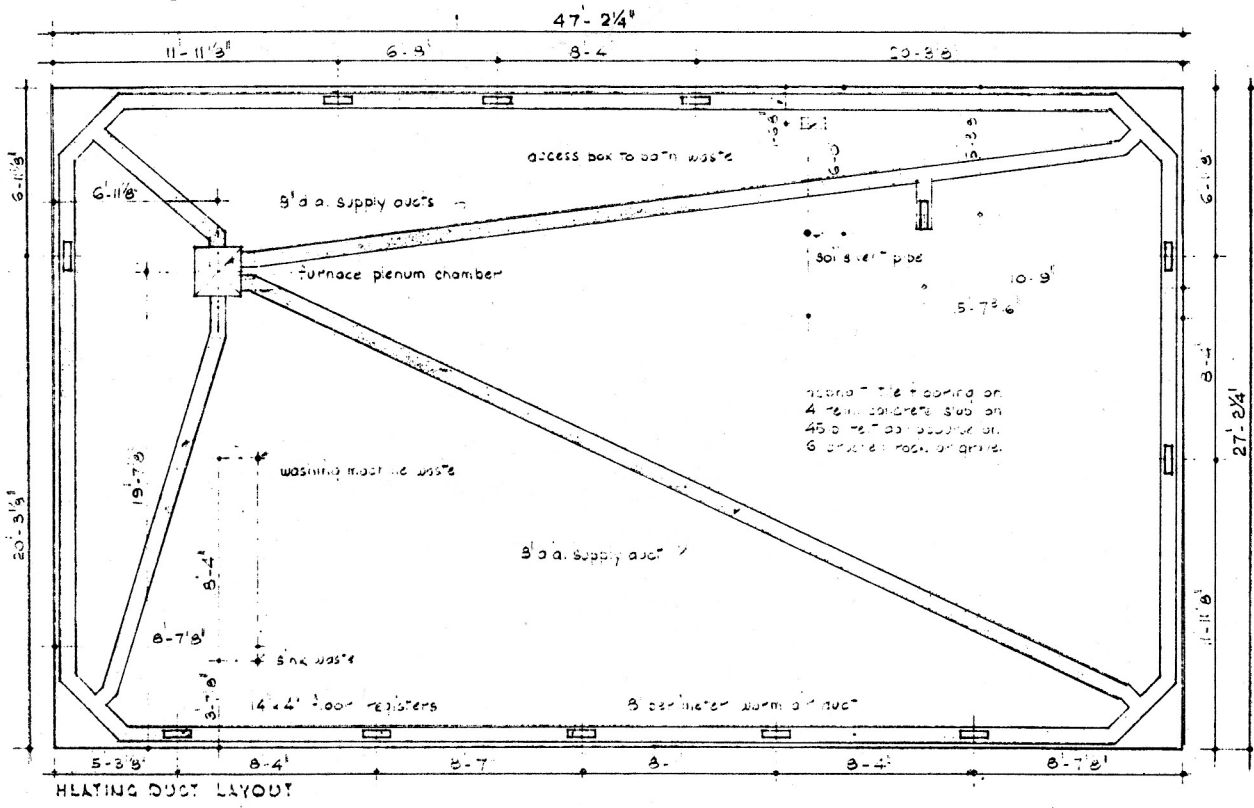
Brad Industries Limited

House Type 4501

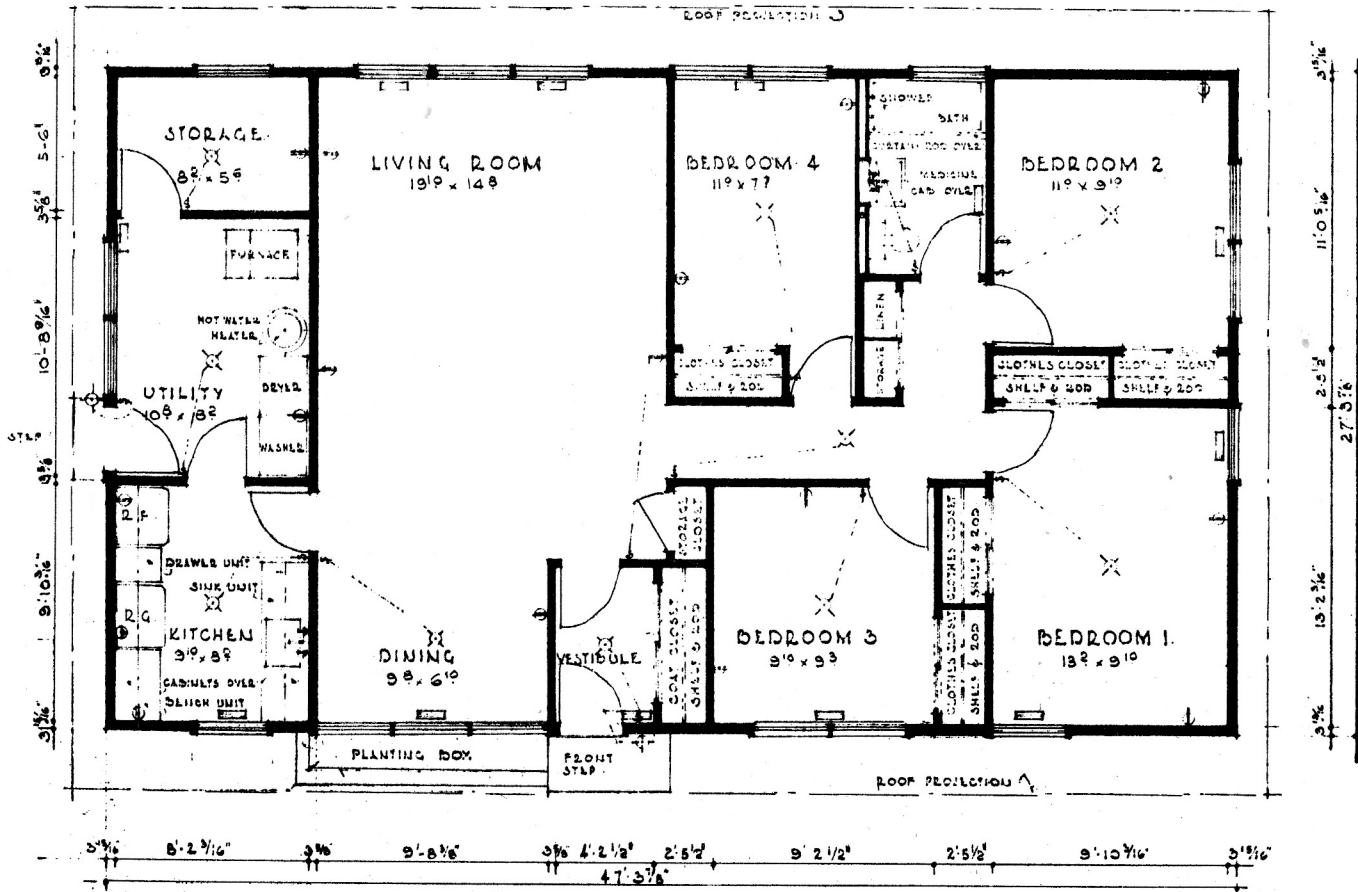
4-bedroom basementless

1,294 square feet

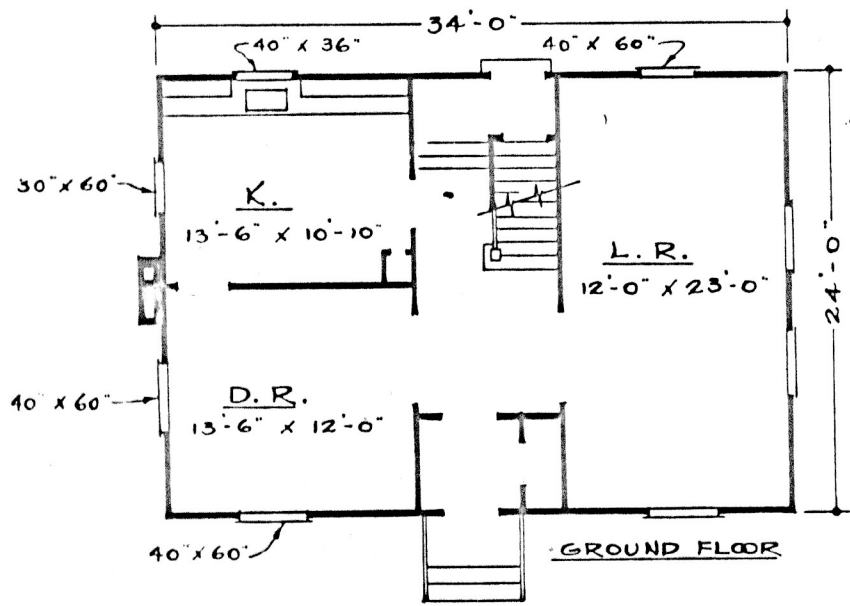
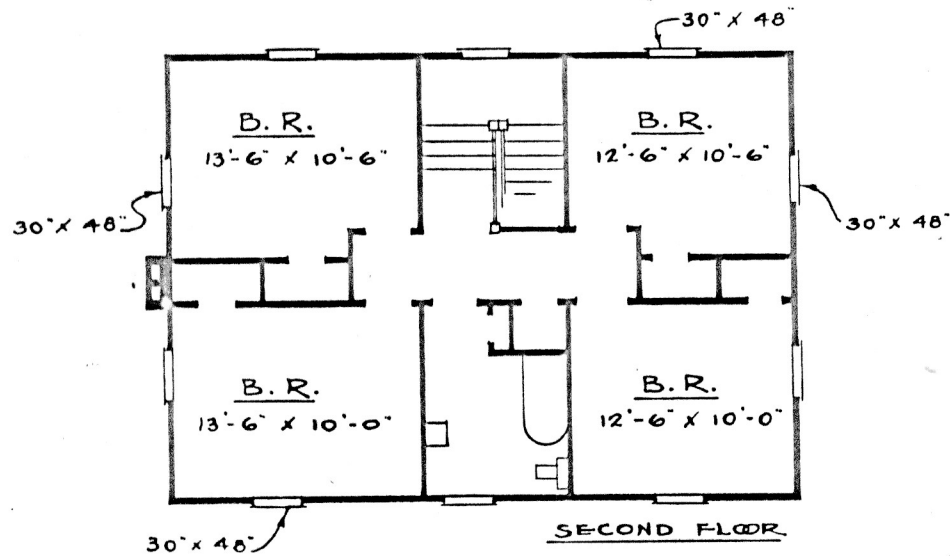
*Price 13400*  
*Rent 92*



3 1/2" 8'-2 3/4" 3 1/2" 14'-8 3/8" 3 1/2" 7'-6 3/8" 3 1/2" 4'-11" 3 1/2" 9'-10 1/2" 3 1/2"



FLOOR PLAN

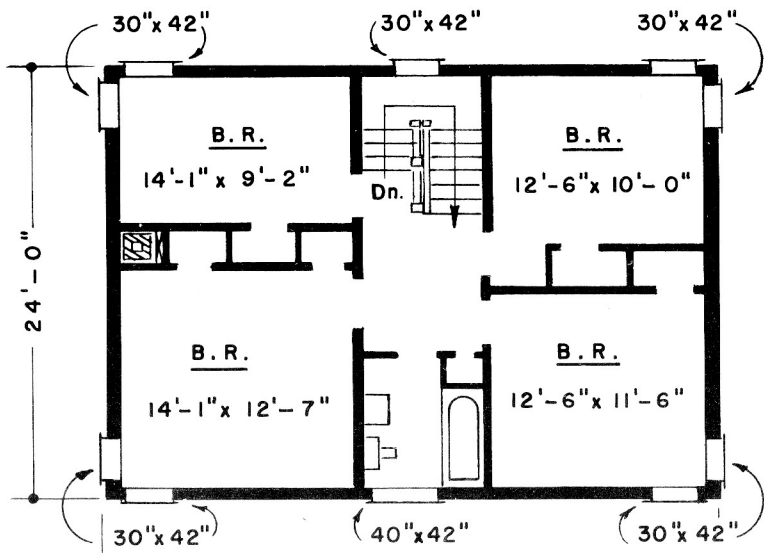


TYPE A-4 HOUSE

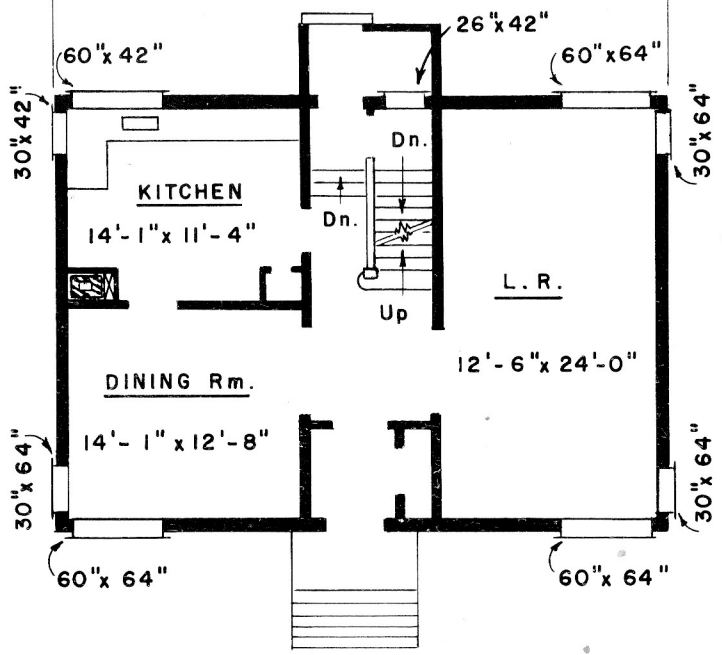
DEEP RIVER  
TOWNSITE

SCALE -  $\frac{3}{32}'' = 1'-0''$

AC-5057-A  
W. Moon



SECOND FLOOR



GROUND FLOOR

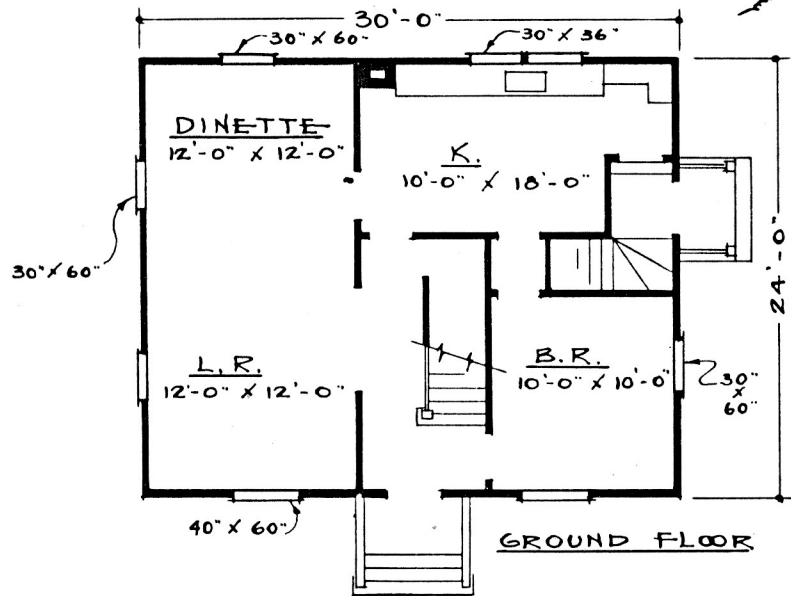
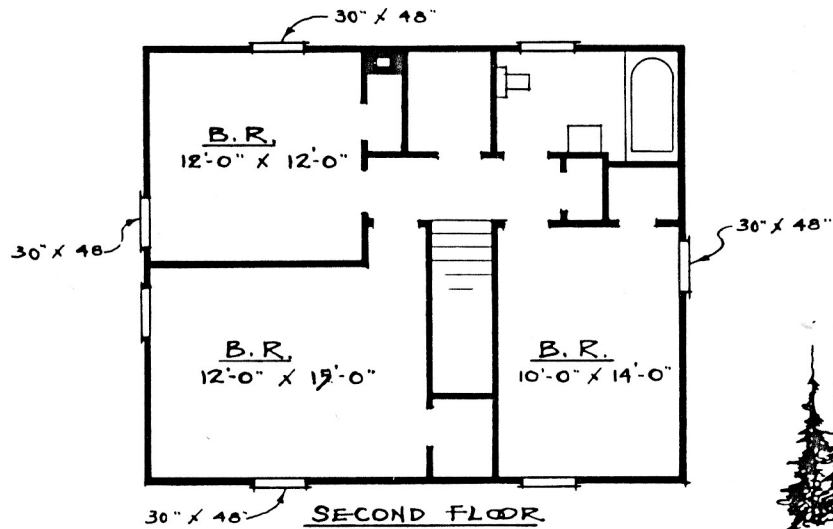


# TYPE "A-8" HOUSE

DEEP RIVER  
TOWNSITE

SCALE -  $\frac{3}{32}$ " = 1'-0"

AC - 5432 - A



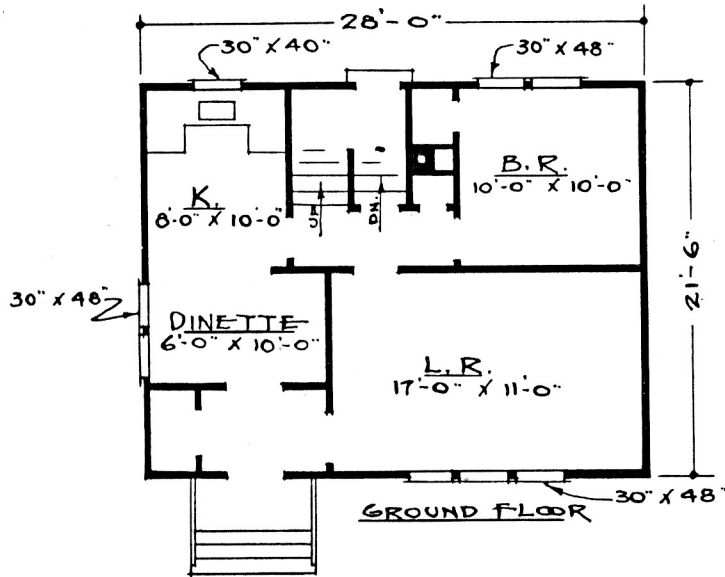
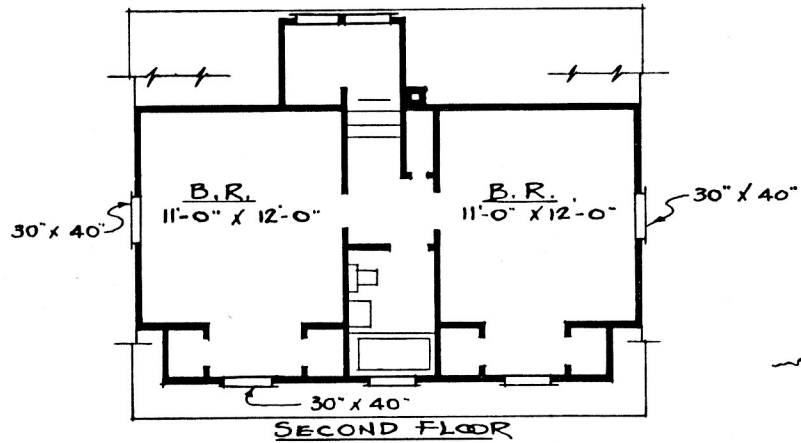
## TYPE B-2 HOUSE

DEEP RIVER  
TOWNSITE

SCALE -  $\frac{3}{32}$ " = 1'-0"

AC-5062-A

W. MOON



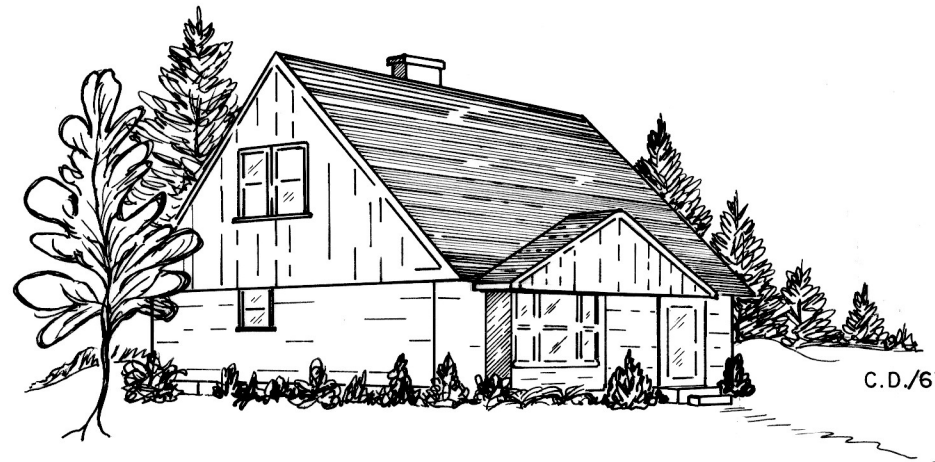
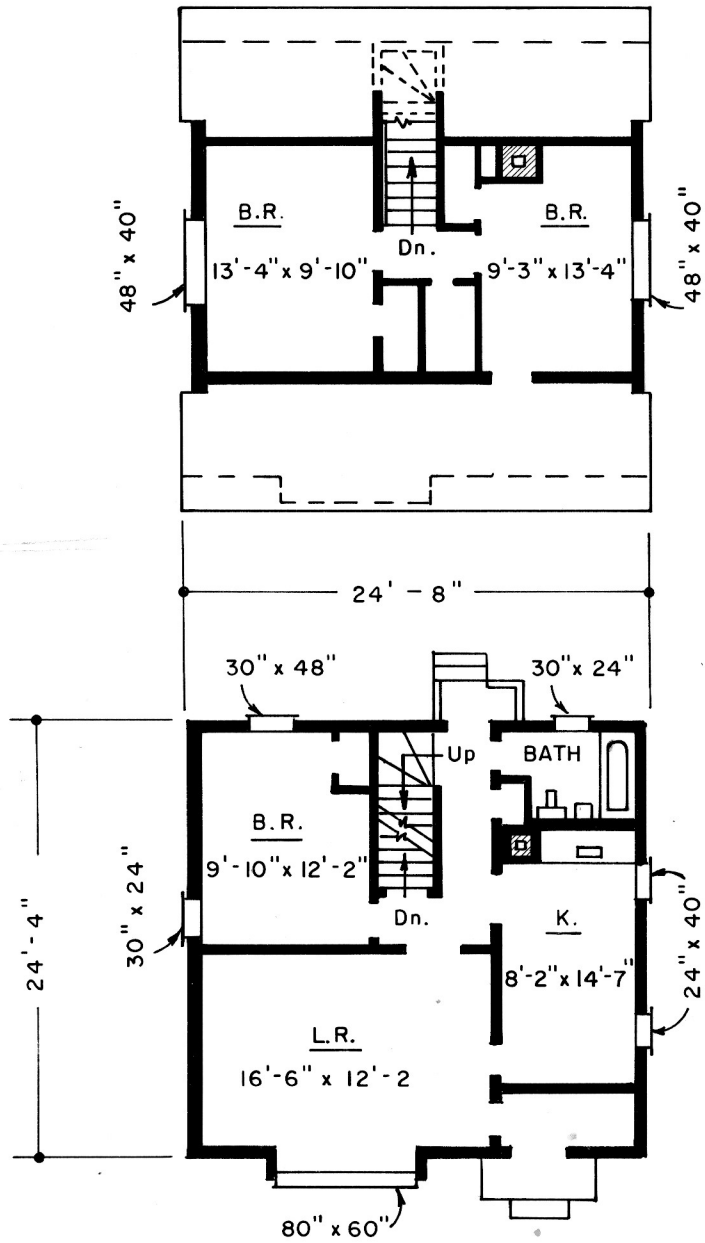
# TYPE B-3 HOUSE

DEEP RIVER  
TOWNSITE

SCALE -  $\frac{3}{32}'' = 1'-0''$

AC-5055-A

W. Wood, Jr.

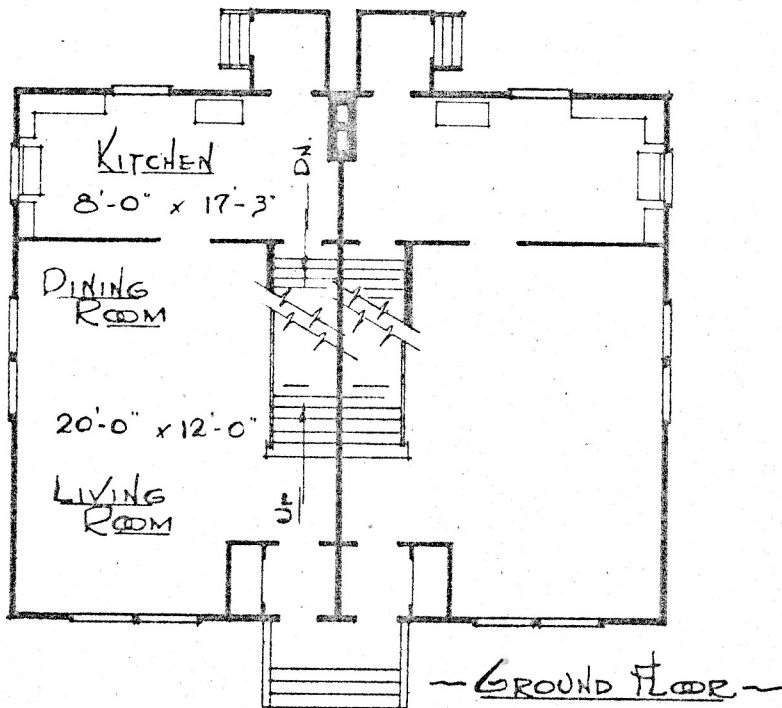
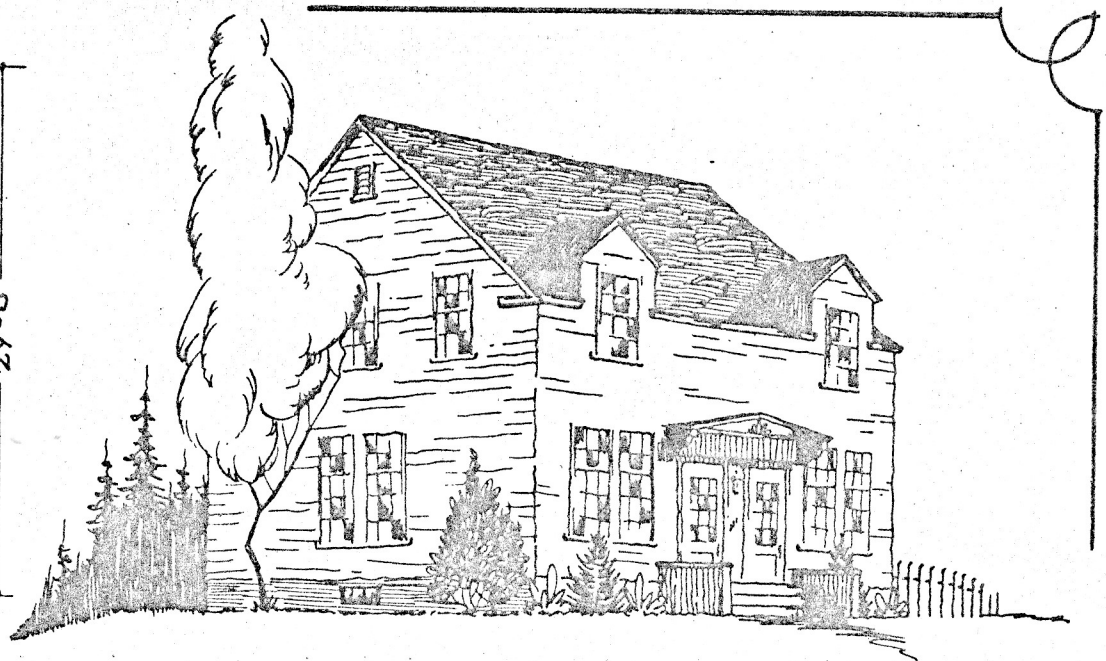
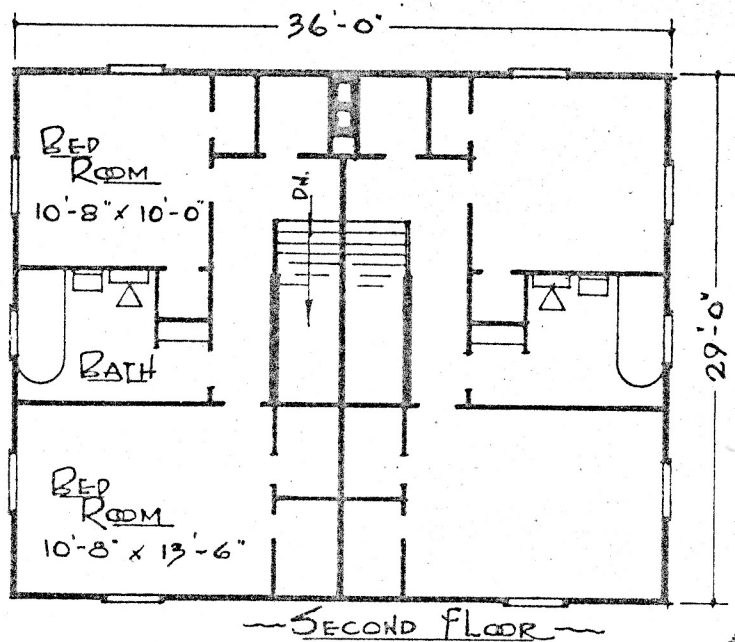


C.D./67

# TYPE C HOUSE

DEEP RIVER  
TOWNSITE

SCALE -  $\frac{3}{32}$ " = 1' - 0"

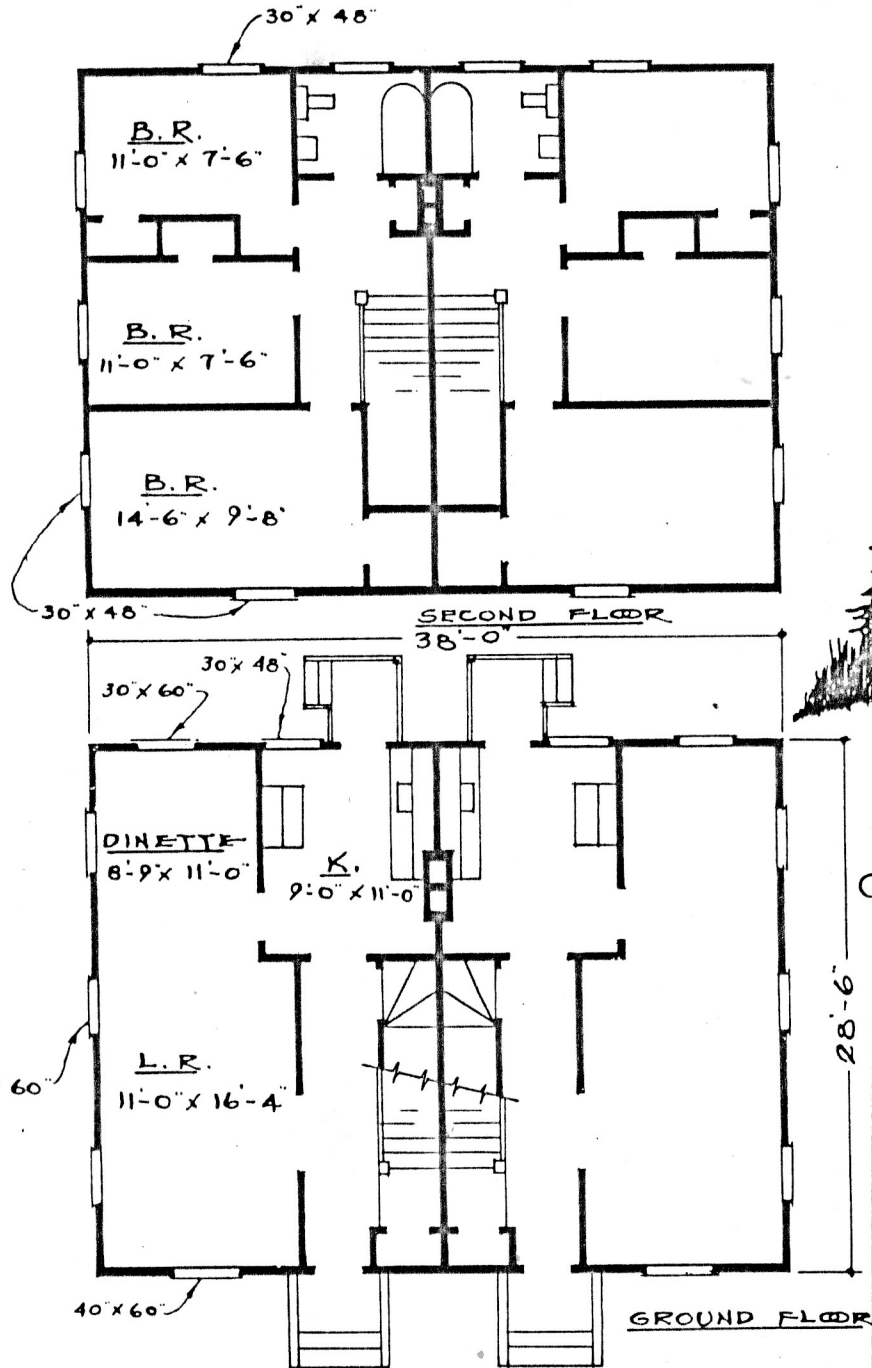


• TYPE C-5  
HOUSE •

DEEP RIVER TOWNSITE

~ SCALE -  $\frac{3}{32}$ " = 1'-0" ~

AC-5348-A  
*ed. Wood*



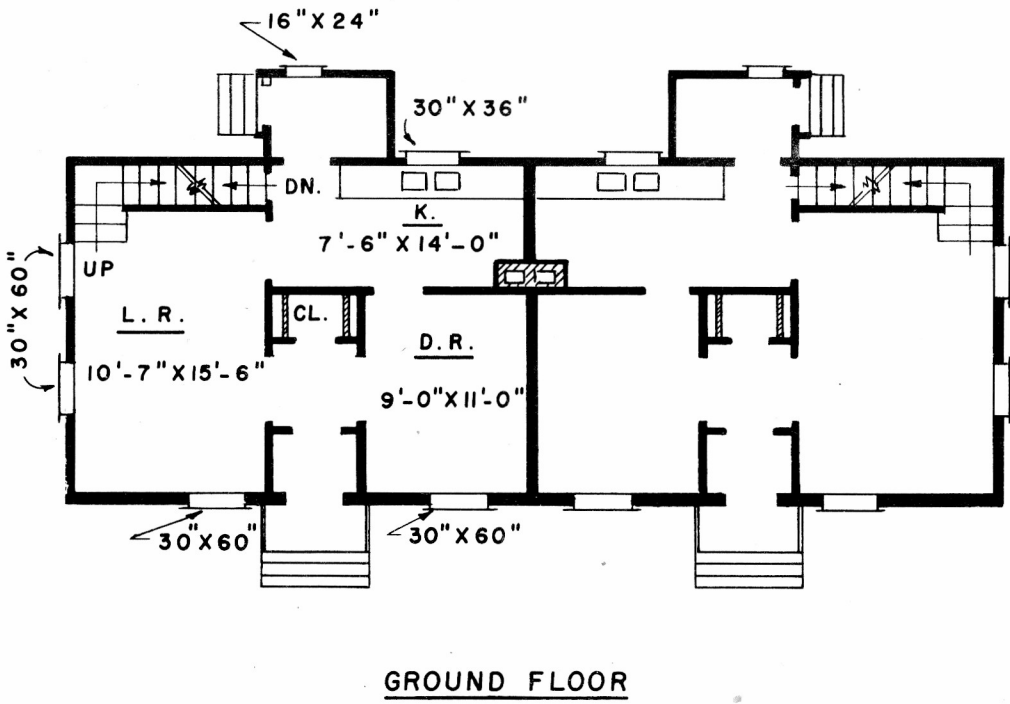
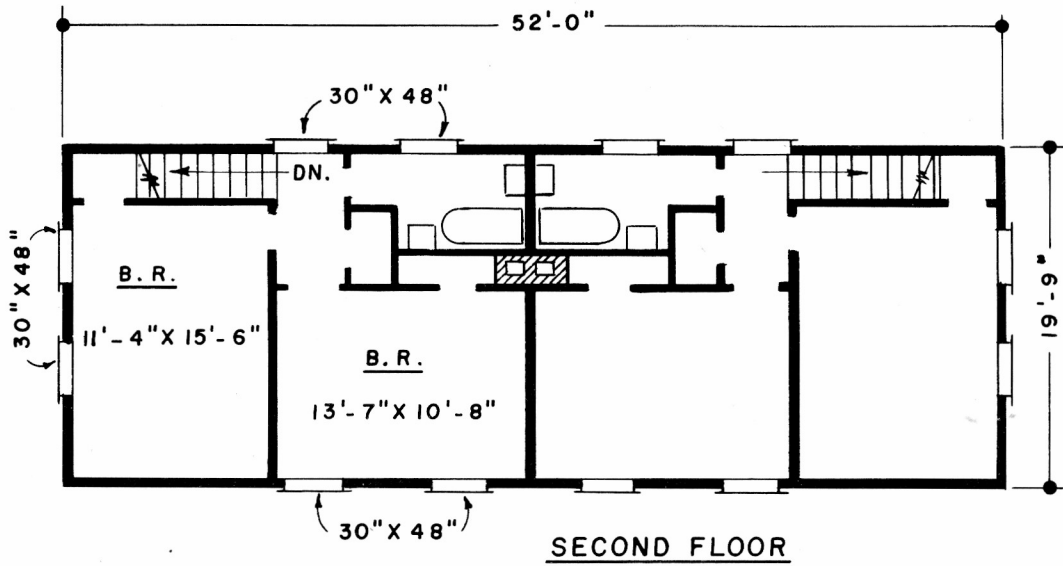
# TYPE C-6 HOUSE

DEEP RIVER  
TOWNSITE

SCALE  $\frac{3}{32} = 1'-0"$

AC-5061-A

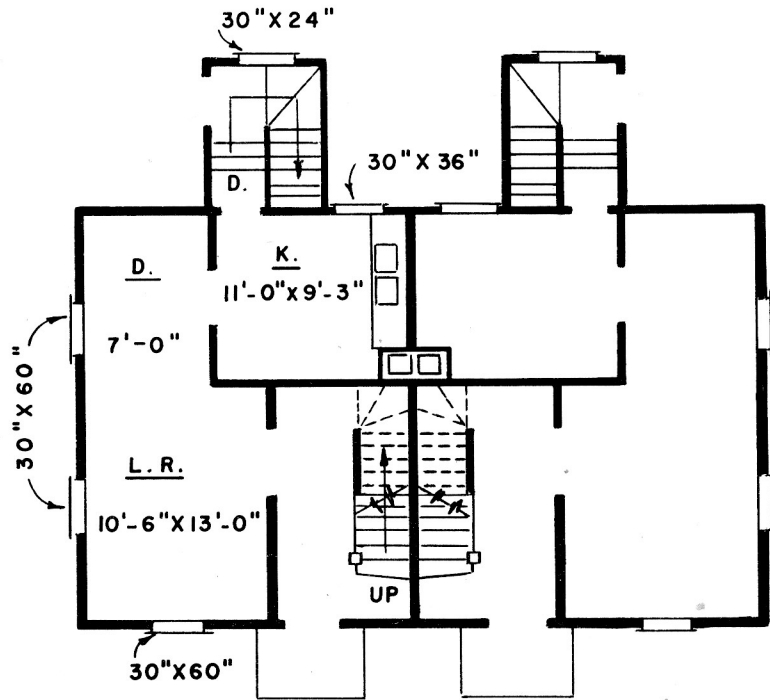
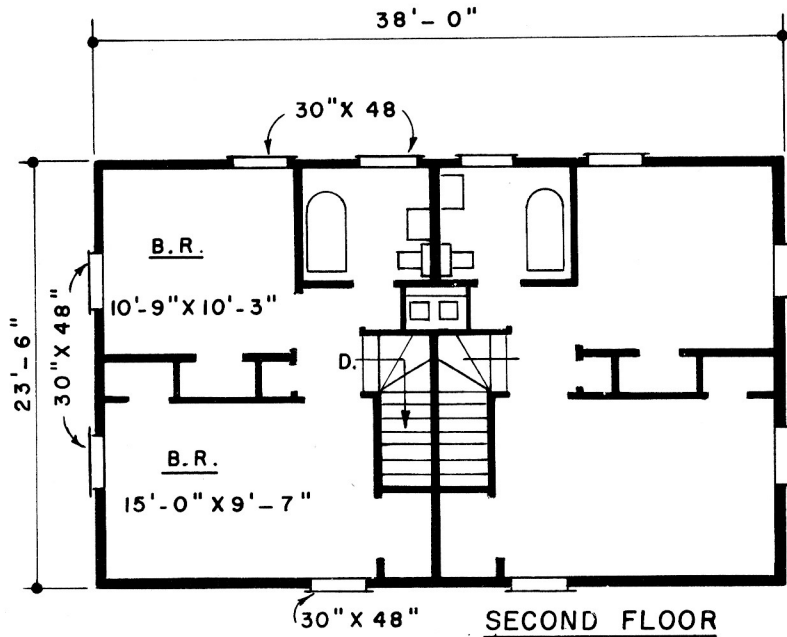
W. Wood



TYPE C-7 HOUSE

DEEP RIVER  
TOWNSITE

SCALE -  $\frac{3}{32}'' = 1'-0''$



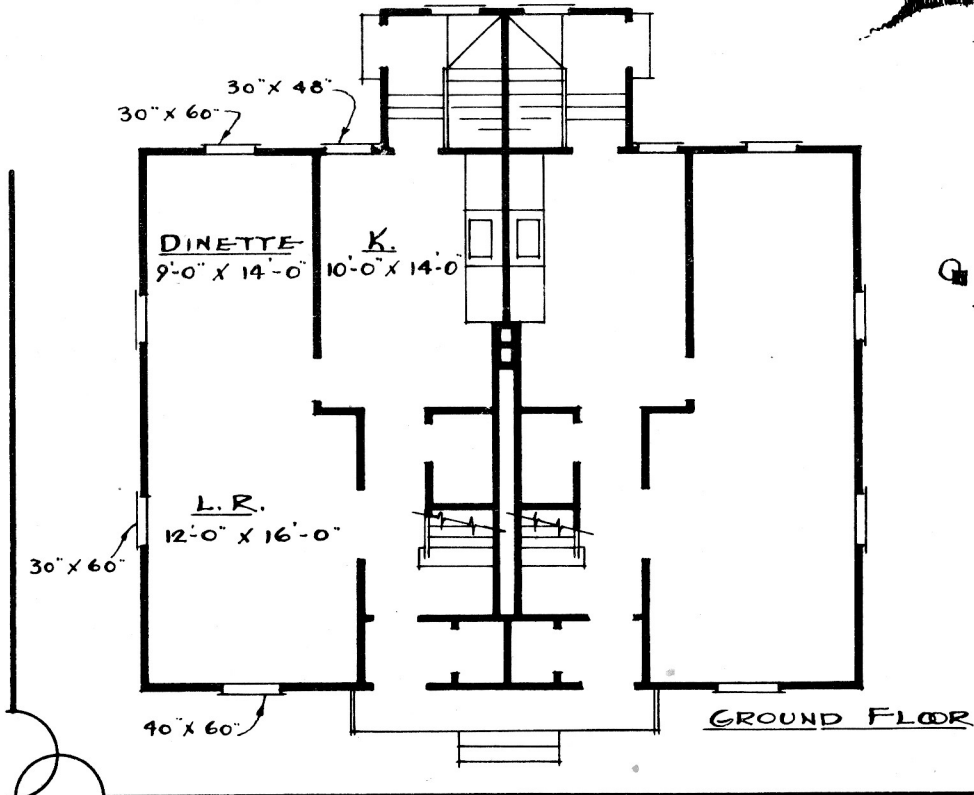
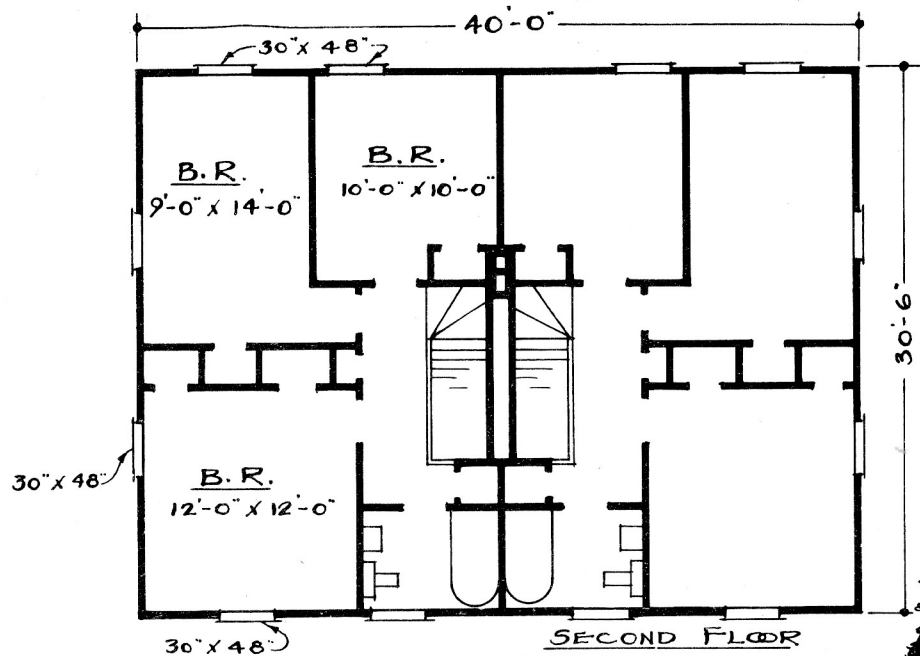
# TYPE C-8 HOUSE

DEEP RIVER

TOWNSITE

SCALE -  $\frac{3}{32}$ " = 1'-0"

AC - 5433 - A



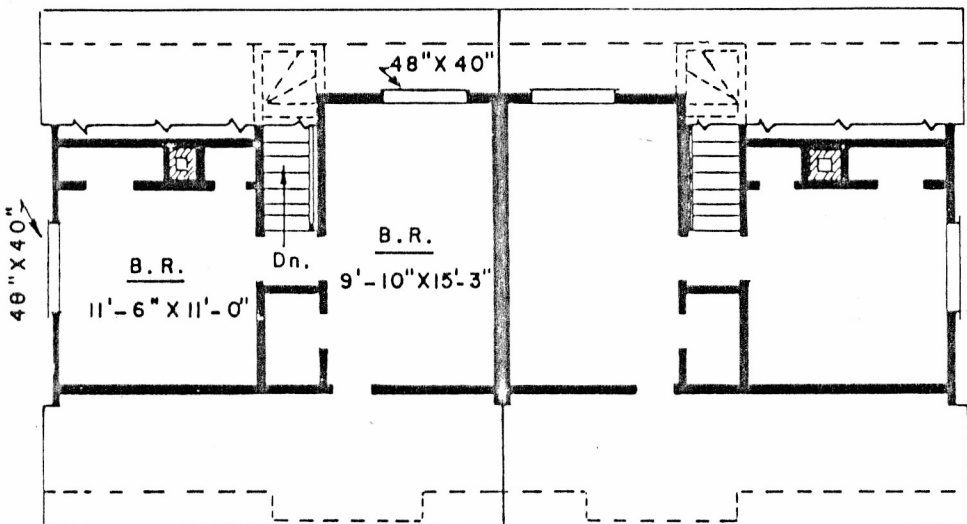
# TYPE C-9 HOUSE

DEEP RIVER  
TOWNSITE

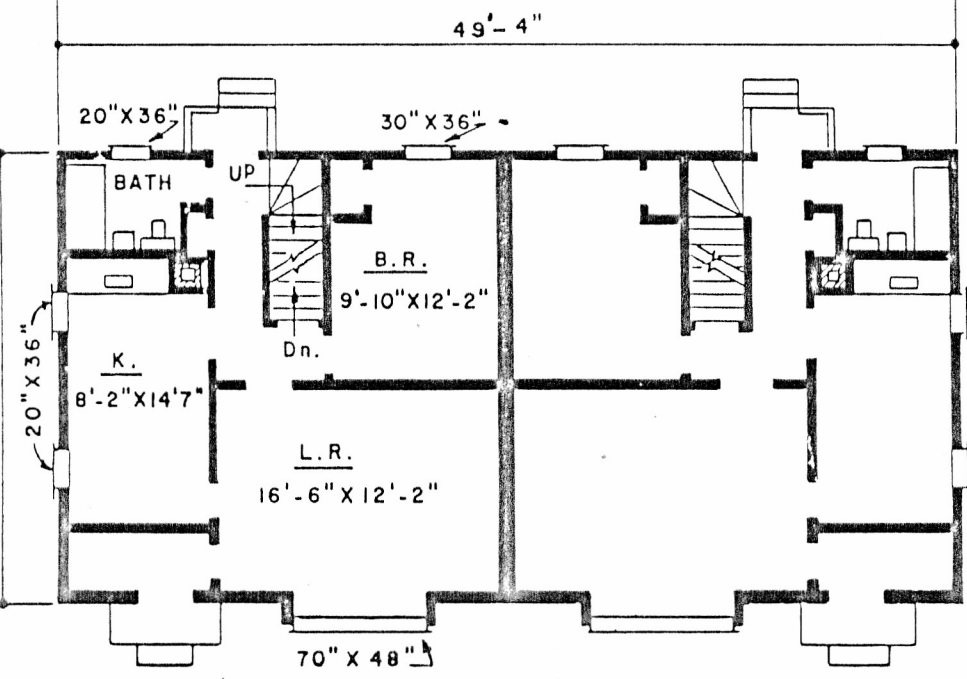
SCALE -  $\frac{3}{32}'' = 1'-0''$

AC-5059-A

W. Moon.



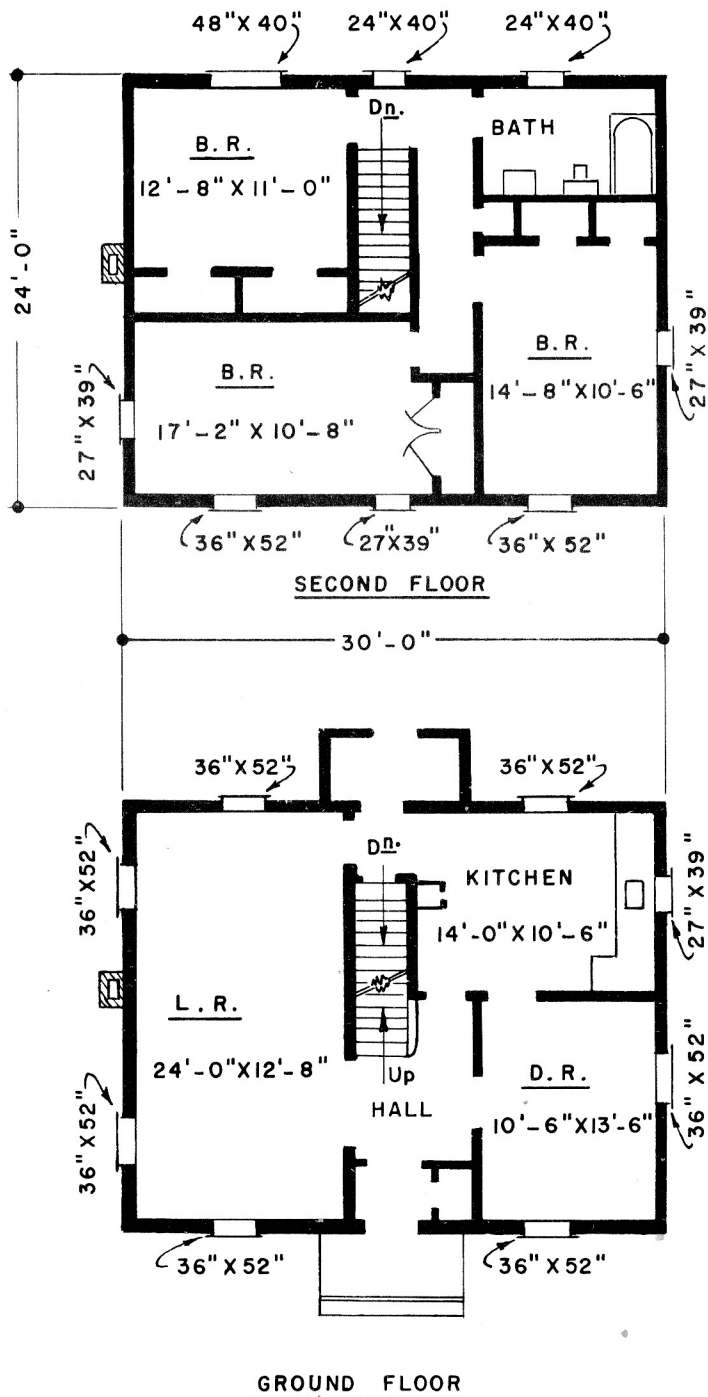
SECOND FLOOR



TYPE C-C HOUSE

DEEP RIVER  
TOWNSITE

SCALE  $\frac{3}{32}'' = 1'-0''$

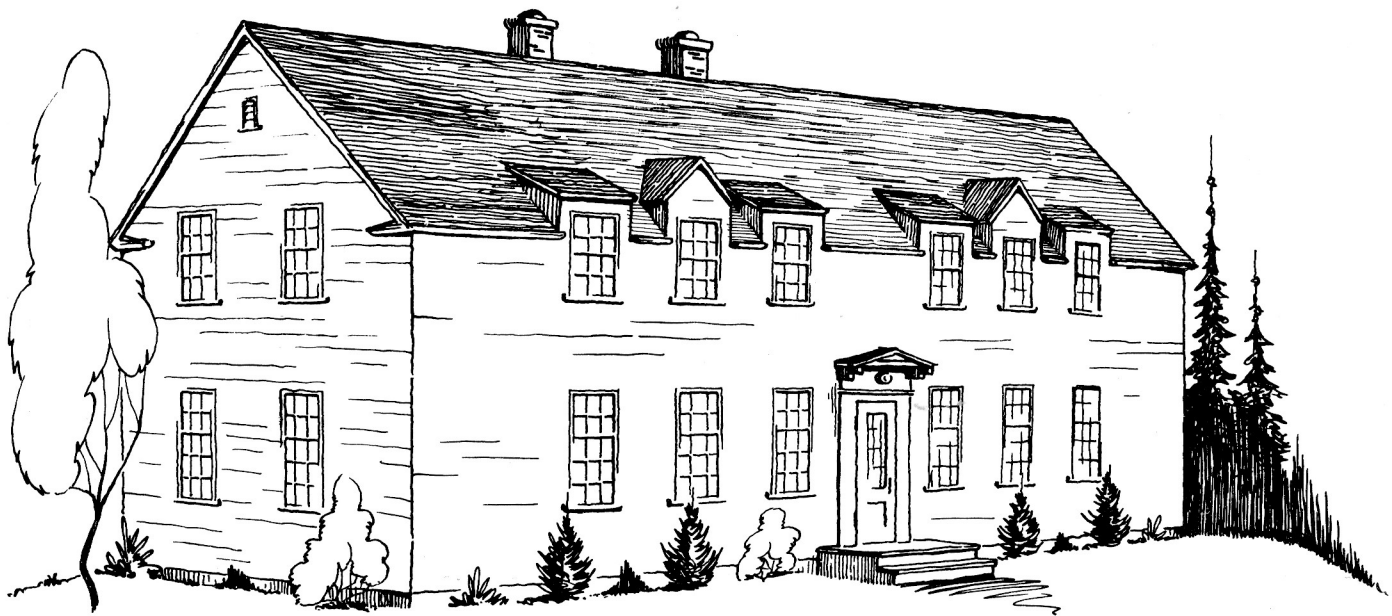


# TYPE "D" HOUSE

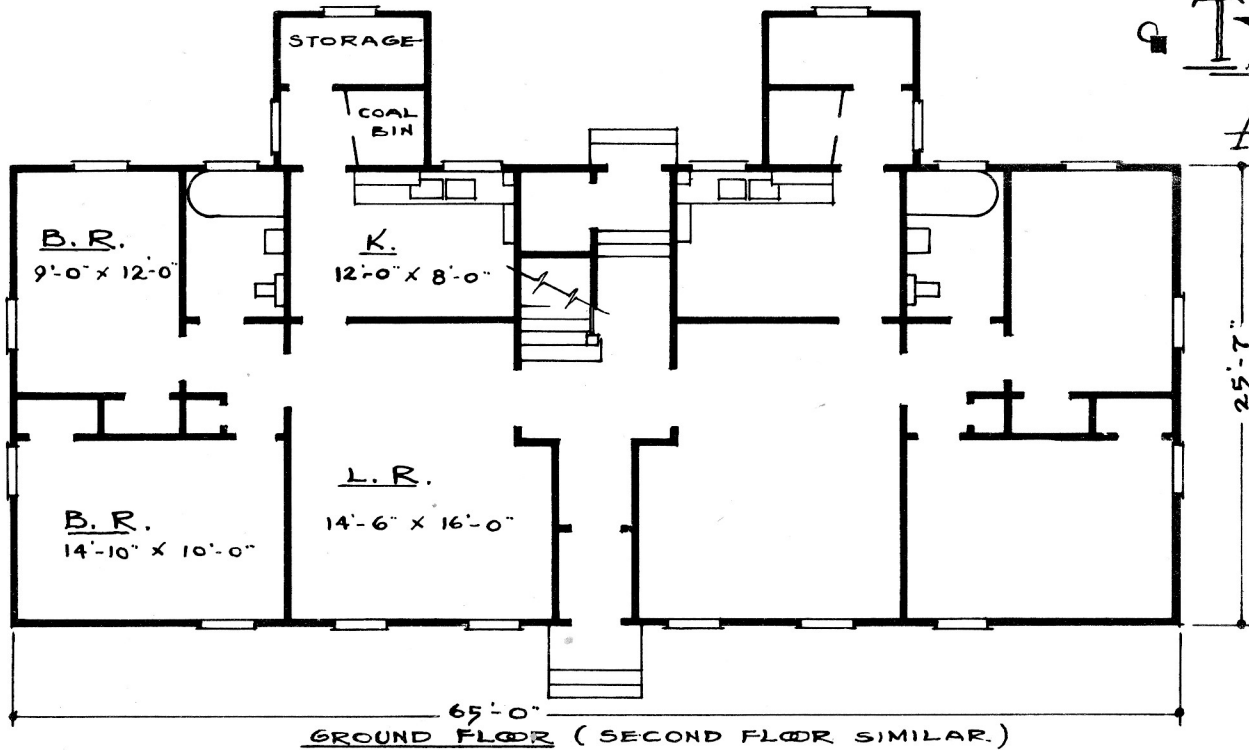
DEEP RIVER  
TOWNSITE

SCALE -  $\frac{3}{32}$ " = 1'-0"

AC - 5430 - A



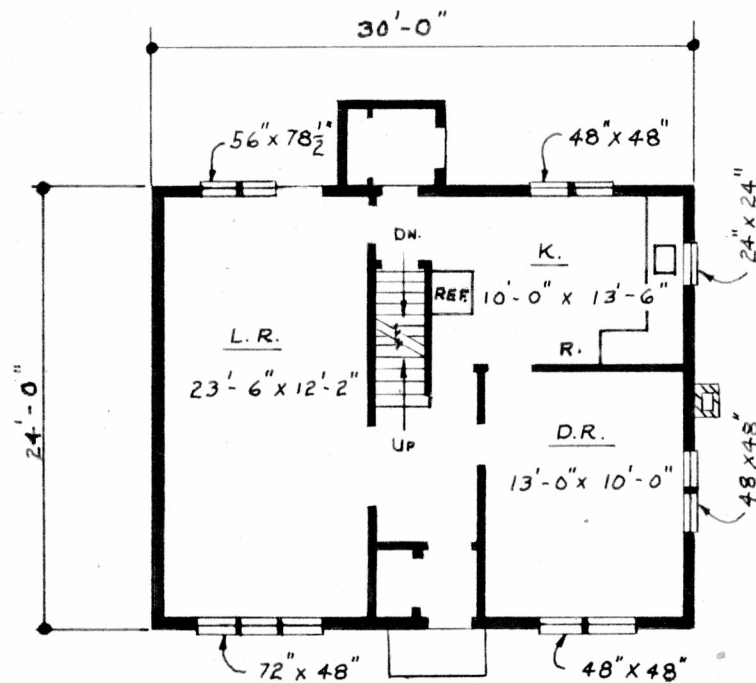
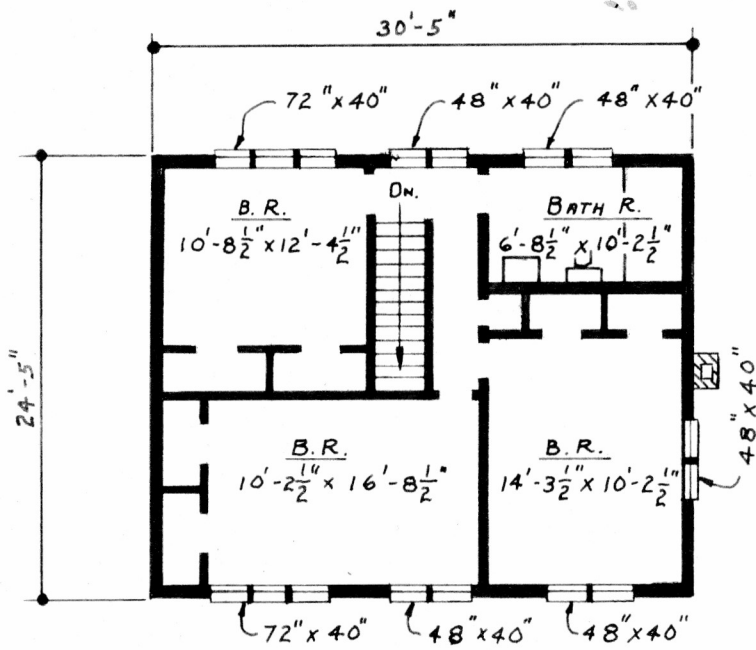
TYPE D-1  
APARTMENT



DEEP RIVER  
TOWNSITE

SCALE  $\frac{3}{32}'' = 1'-0''$

AC-5060-A  
W. M. ...

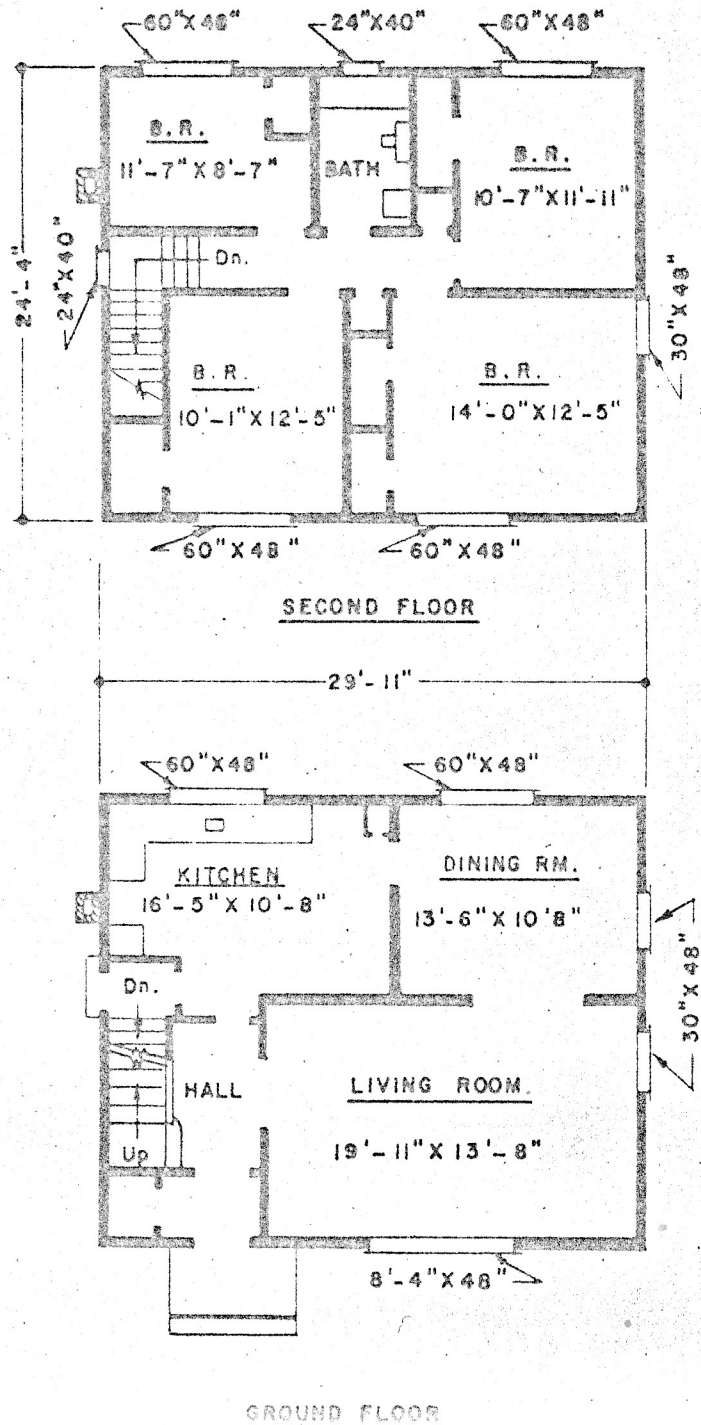


# TYPE D-2 HOUSE

DEEP RIVER ONT.

SCALE -  $\frac{3}{32} = 1' - 0''$

AC-5498

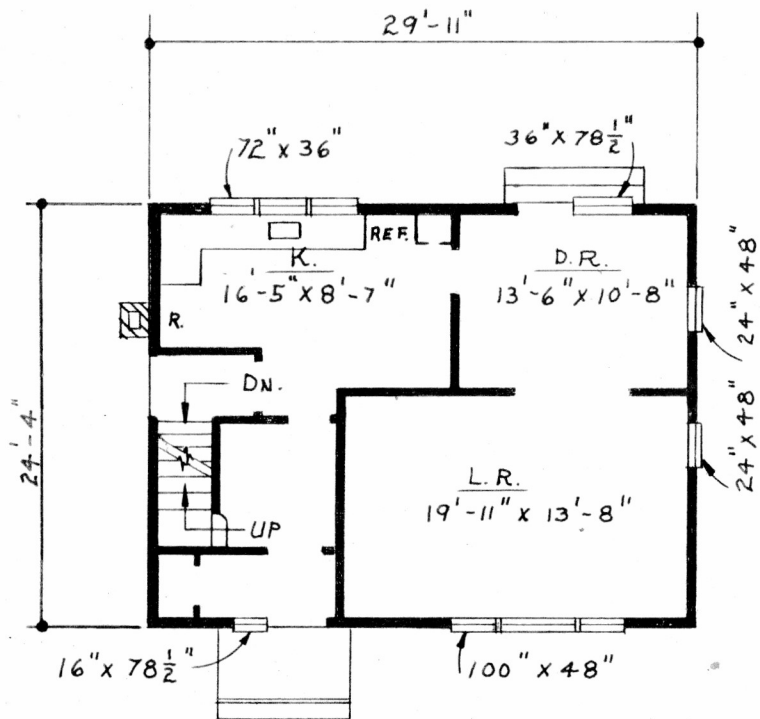
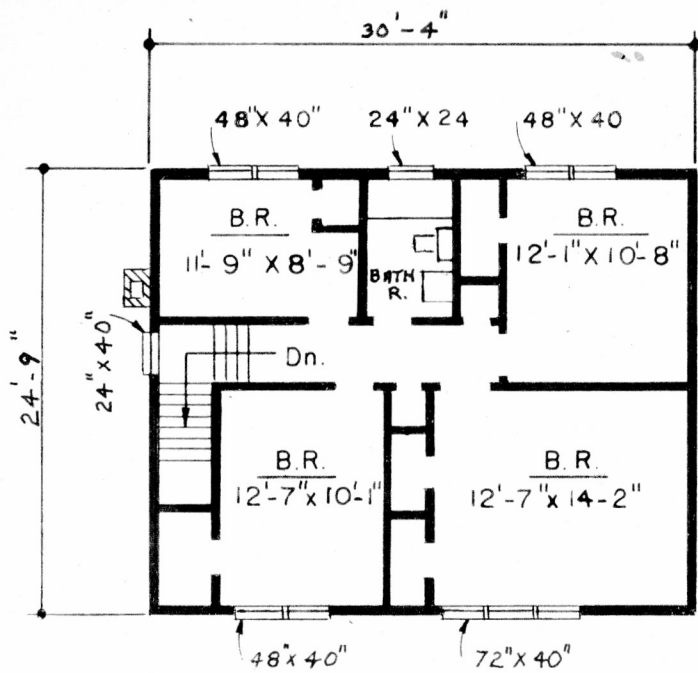


# TYPE "E" HOUSE

DEEP RIVER  
TOWNSITE

SCALE -  $\frac{3}{32}$ " = 1'-0"

AC - 5431 - A

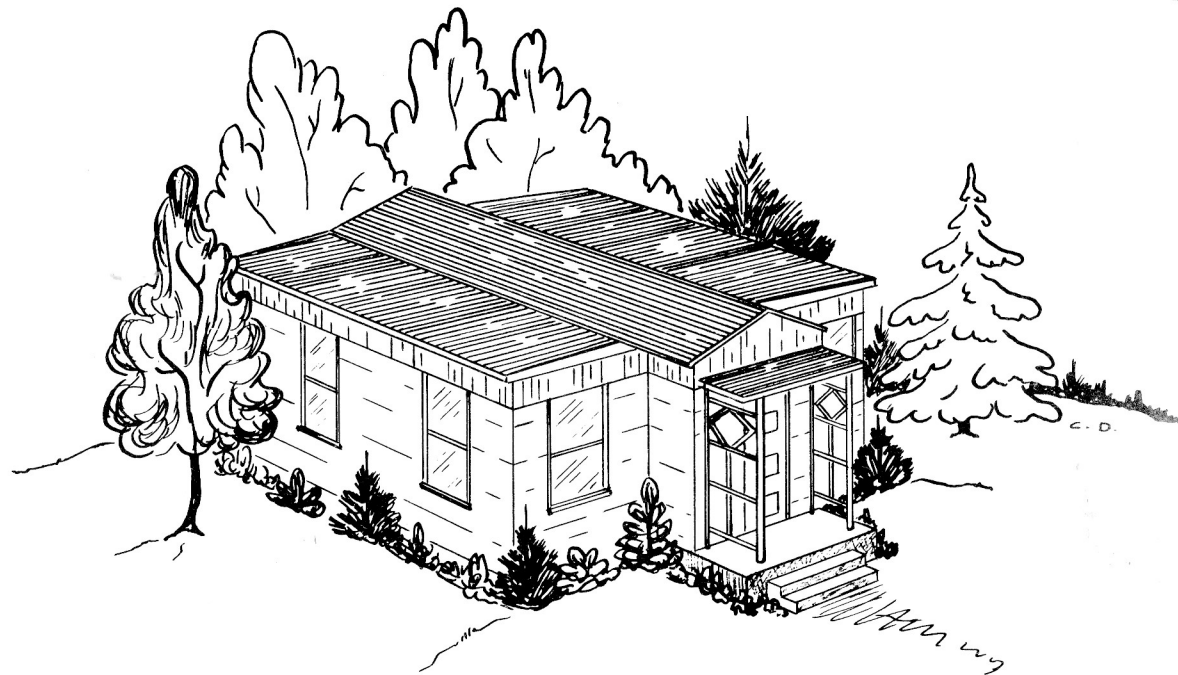
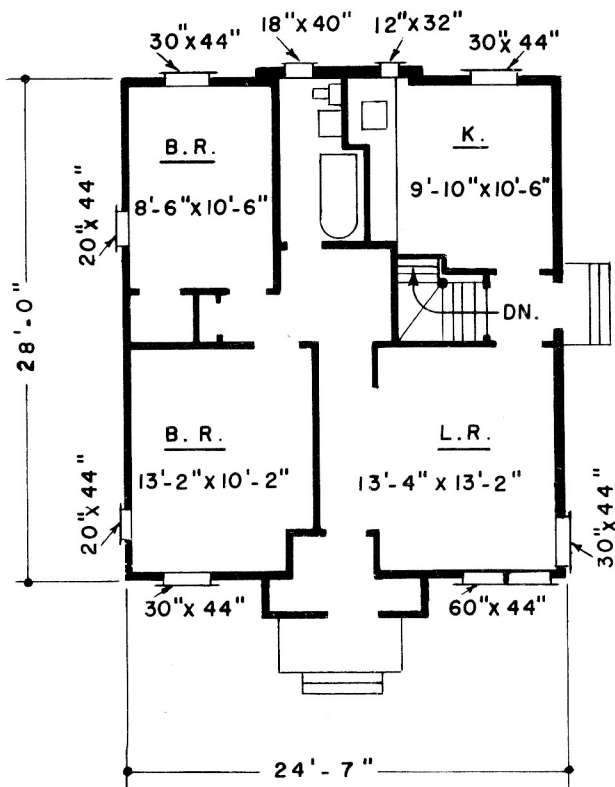


# TYPE E1 HOUSE

DEEP RIVER ONT.

SCALE -  $\frac{3}{32}'' = 1'-0''$

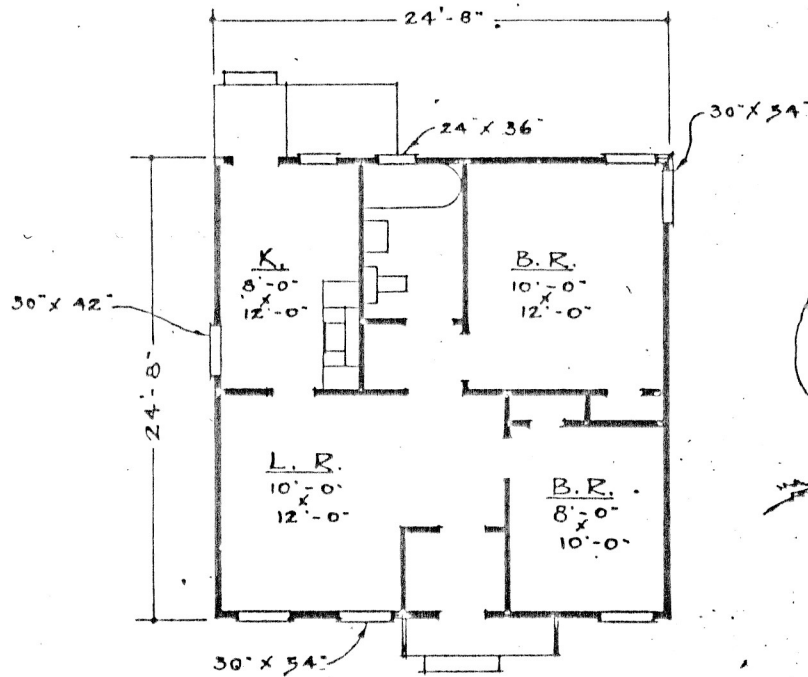
AC-5496



# TYPE F-I HOUSE

DEEP RIVER  
TOWNSITE

SCALE -  $\frac{3}{32}$ " = 1'-0"



GROUND FLOOR



TYPE H-2 HOUSE

DEEP RIVER  
TOWNSITE

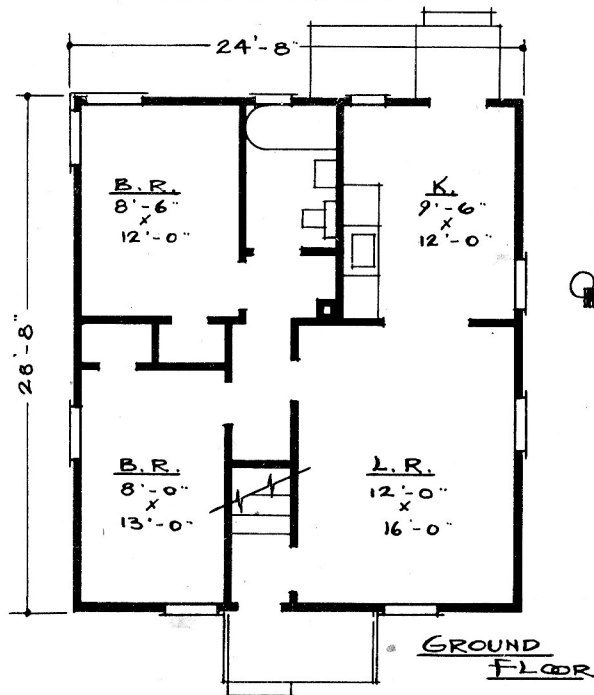
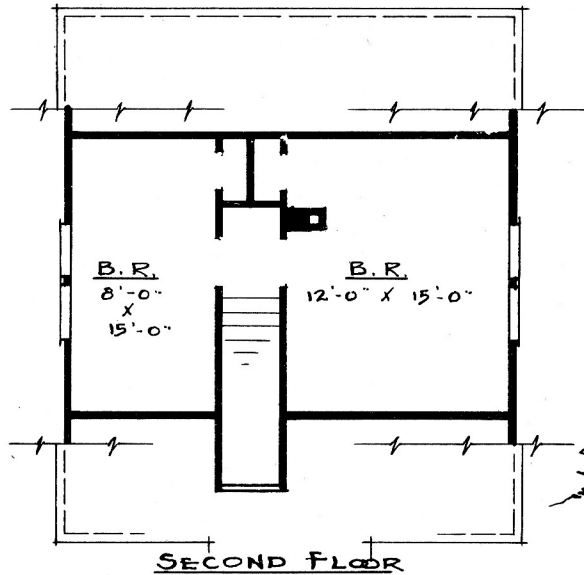
W-4

SCALE -  $\frac{3}{32}$  - 1'-0"

35  
25  
125  
10  
50  
6/7

AC-5056-1

W. M. ...

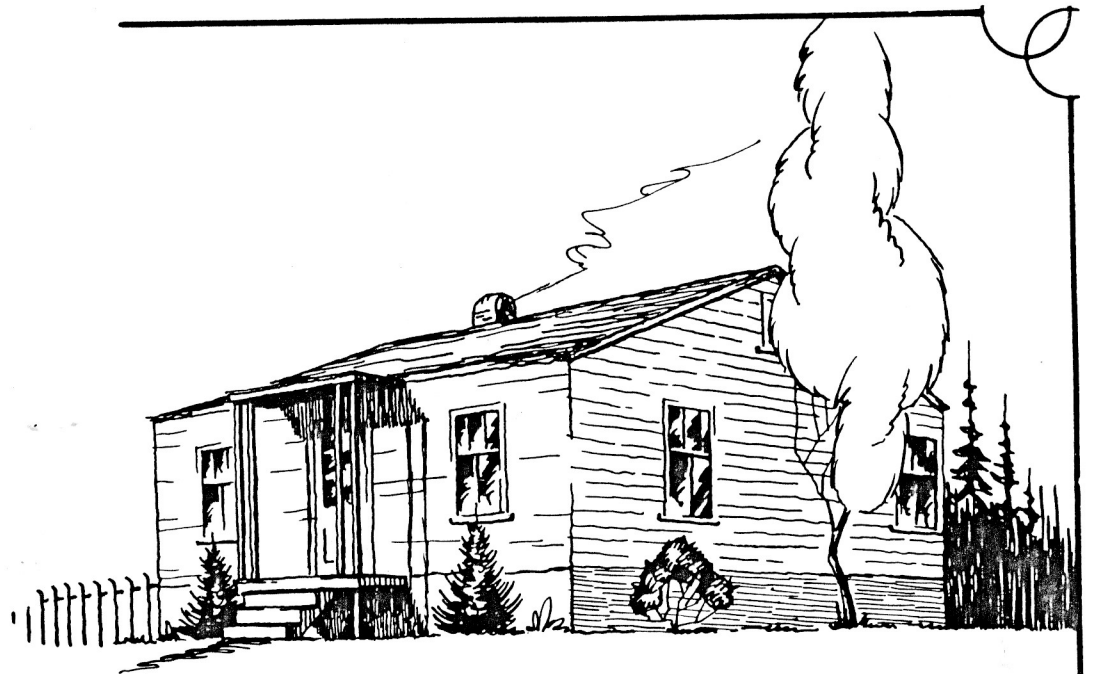
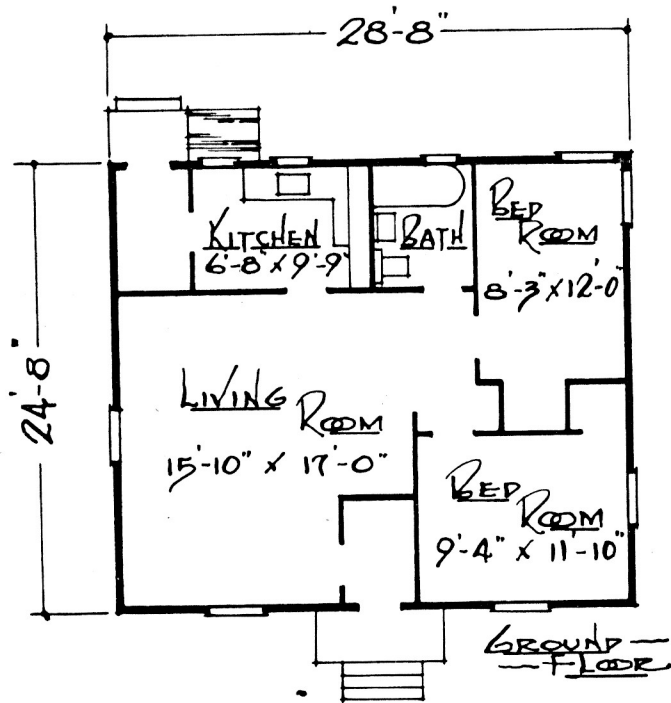


# TYPE H-12 HOUSE

DEEP RIVER  
TOWNSITE

SCALE -  $\frac{3}{32}'' = 1'-0''$

AC-5058-A  
W. MOON

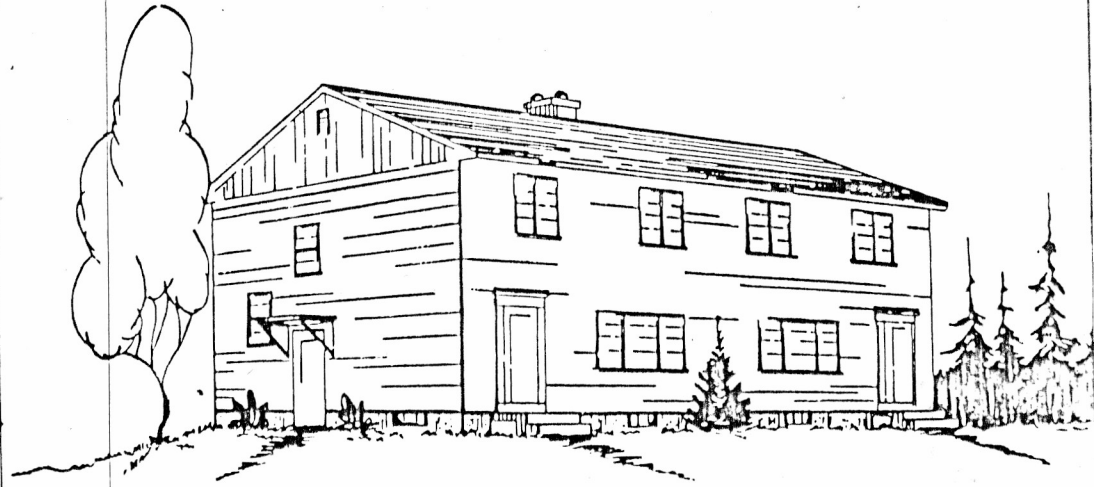
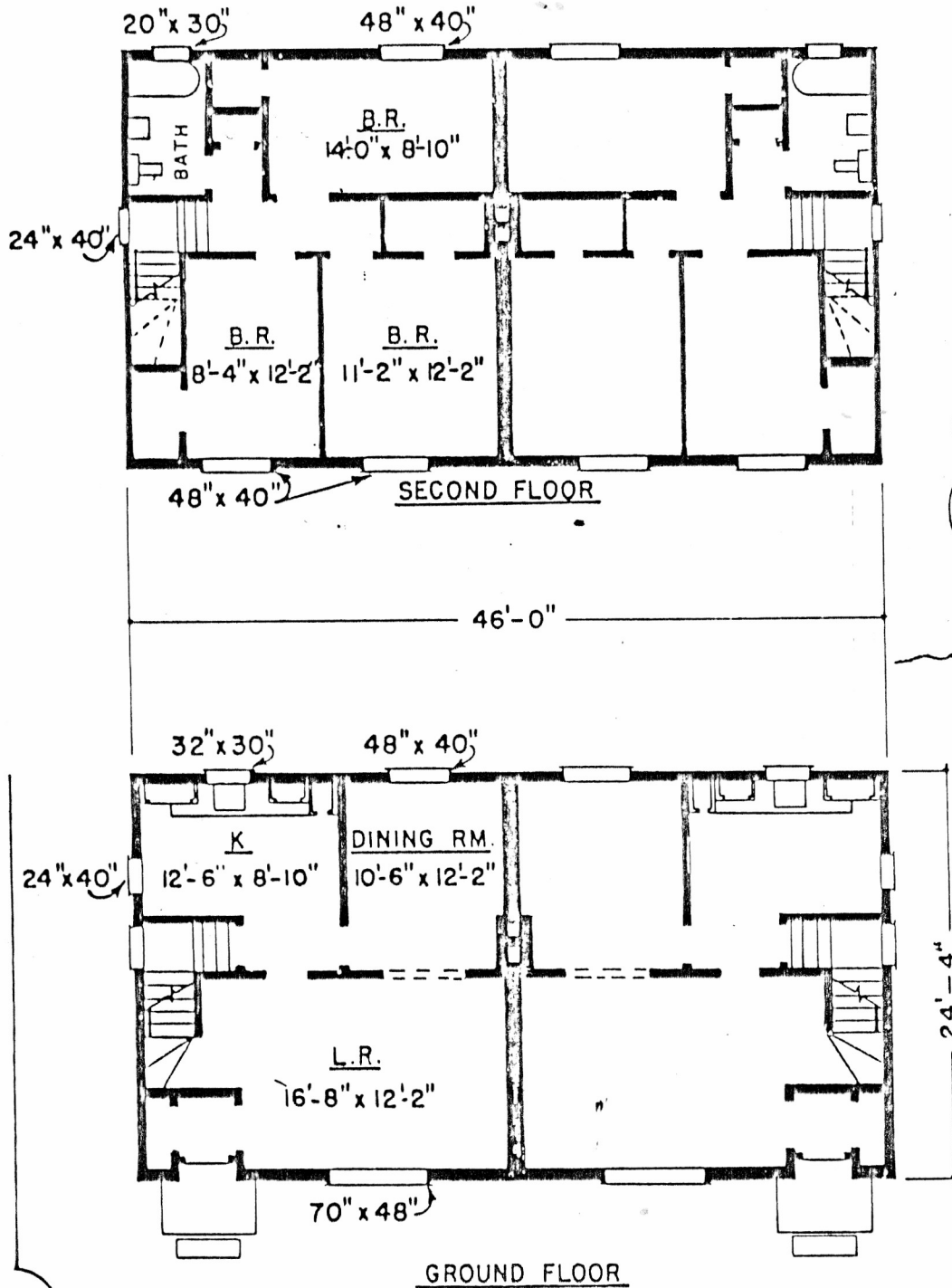


• TYPE H-22 HOUSE •

DEEP RIVER TOWNSITE

— SCALE —  $\frac{3}{32}$ " = 1'-0" —

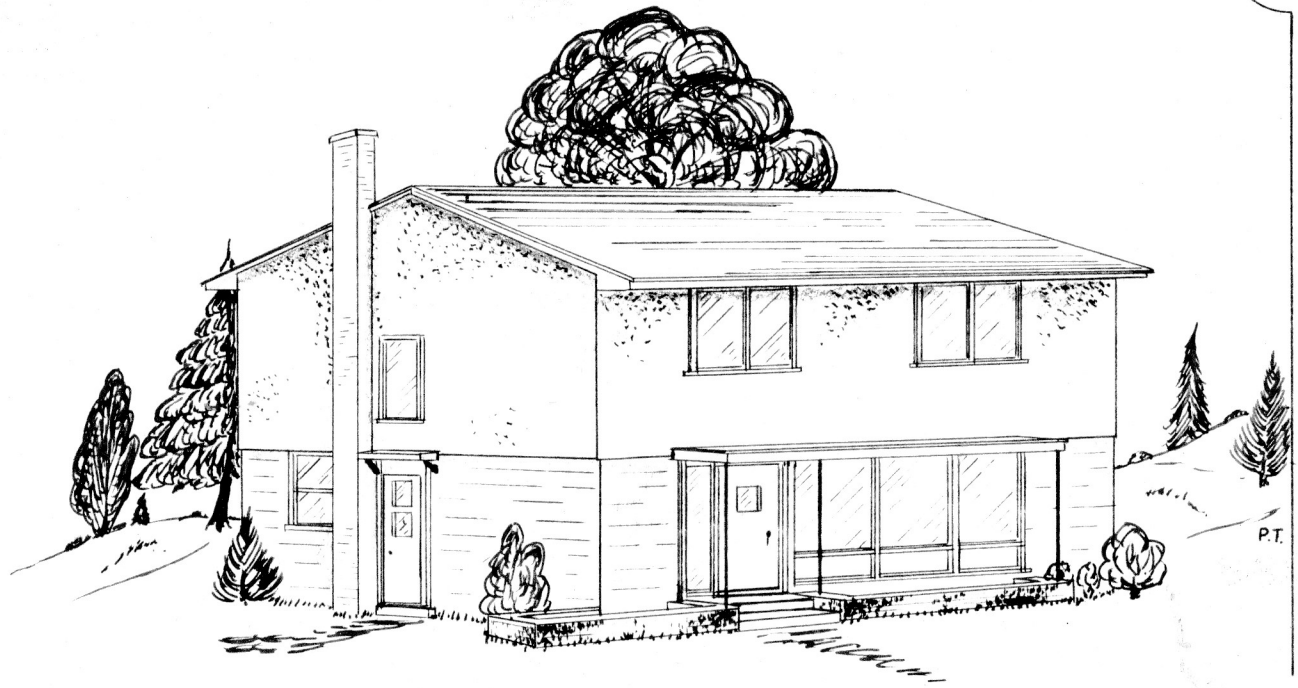
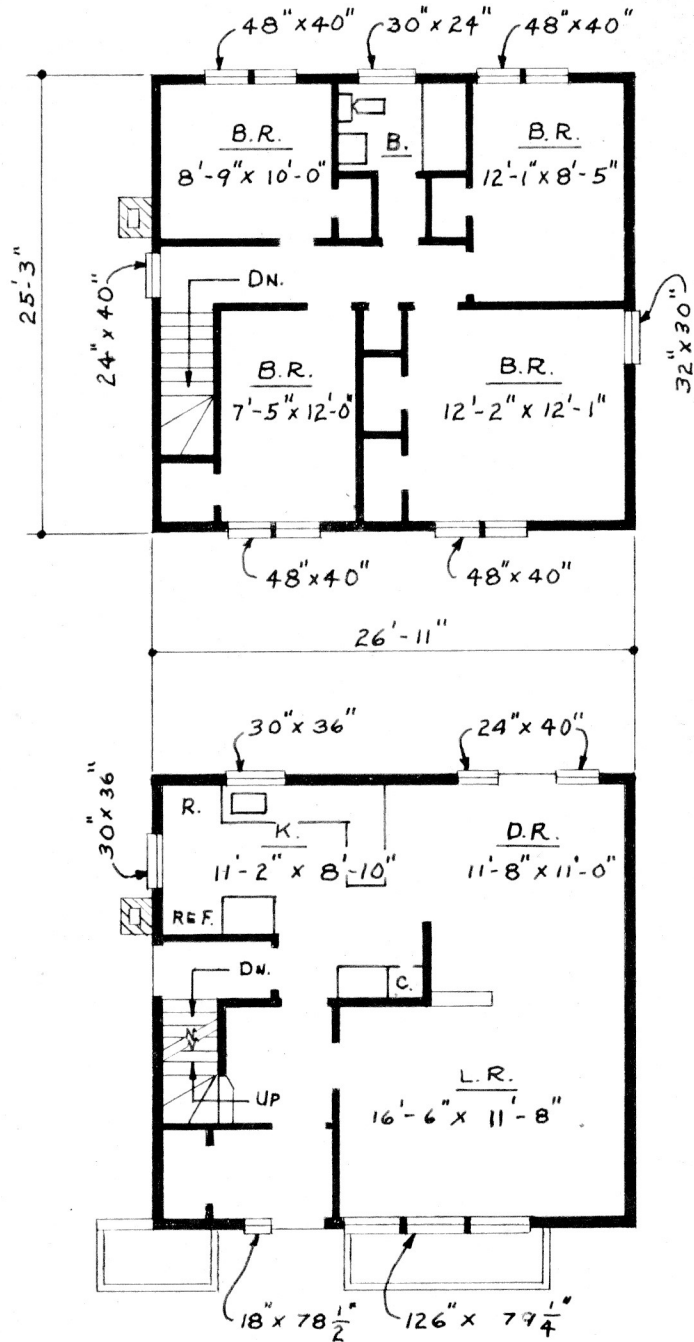
AC-5349-A  
mod-



# TYPE J-J HOUSE

DEEP RIVER  
TOWNSITE

SCALE -  $\frac{3}{32}$ " = 1'-0"

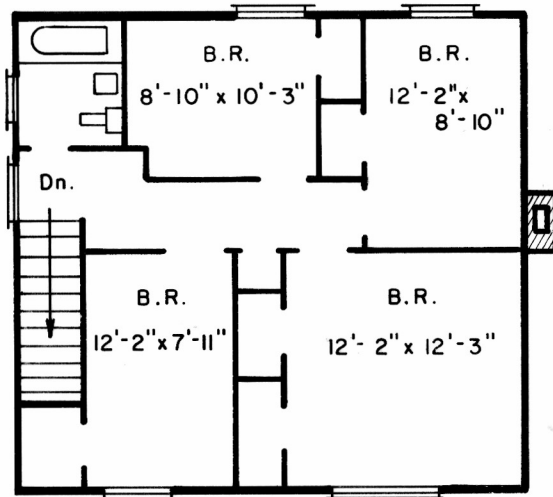


# TYPE K-1 HOUSE

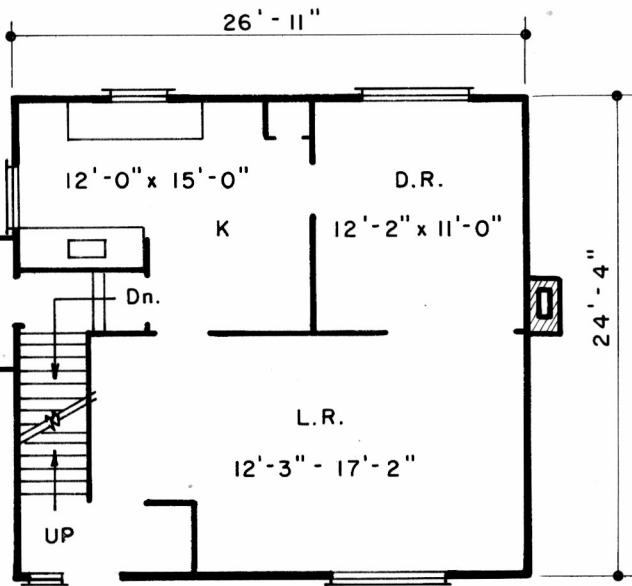
DEEP RIVER ONT.

SCALE -  $\frac{3}{32}'' = 1' - 0''$

AC-5497



SECOND FLOOR



GROUND FLOOR

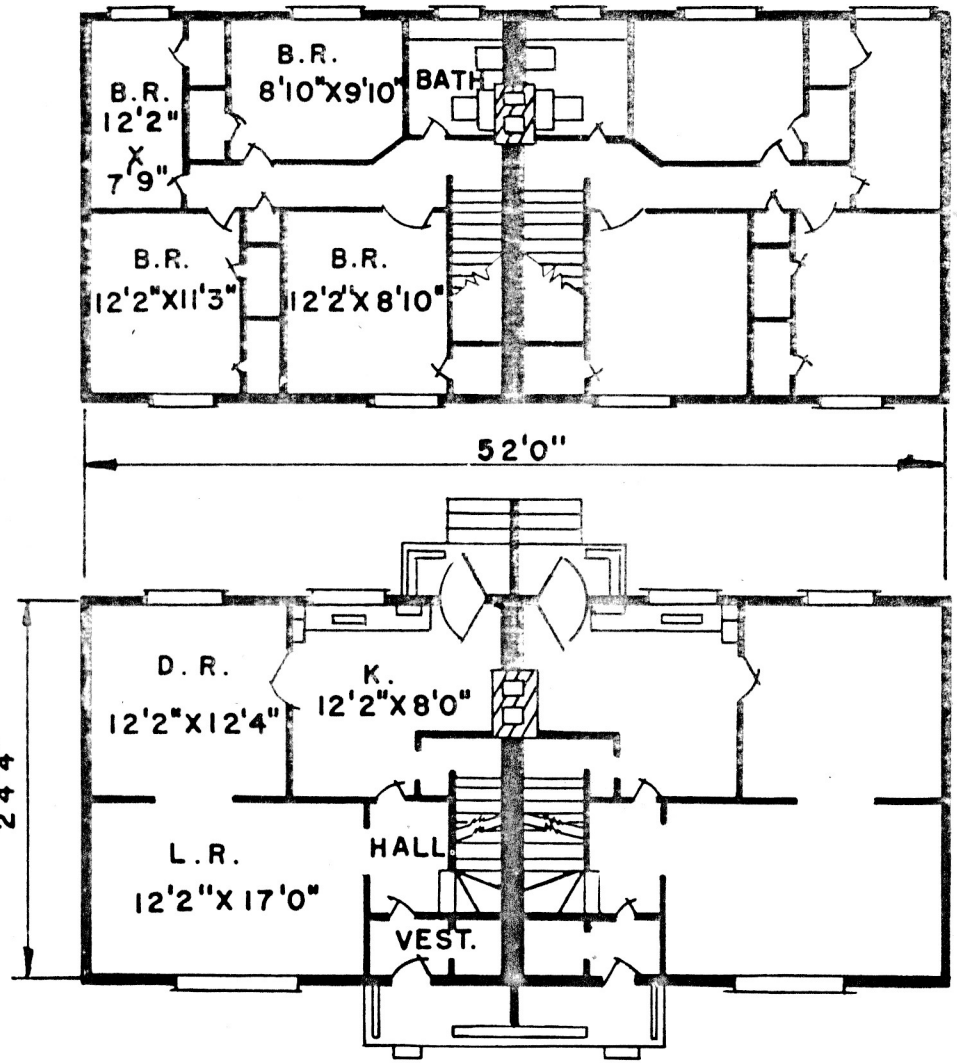
— FULL BASEMENT —



TYPE K-56 HOUSE

DEEP RIVER  
TOWNSITE

SCALE :  $\frac{3}{32}$ " = 1'-0"

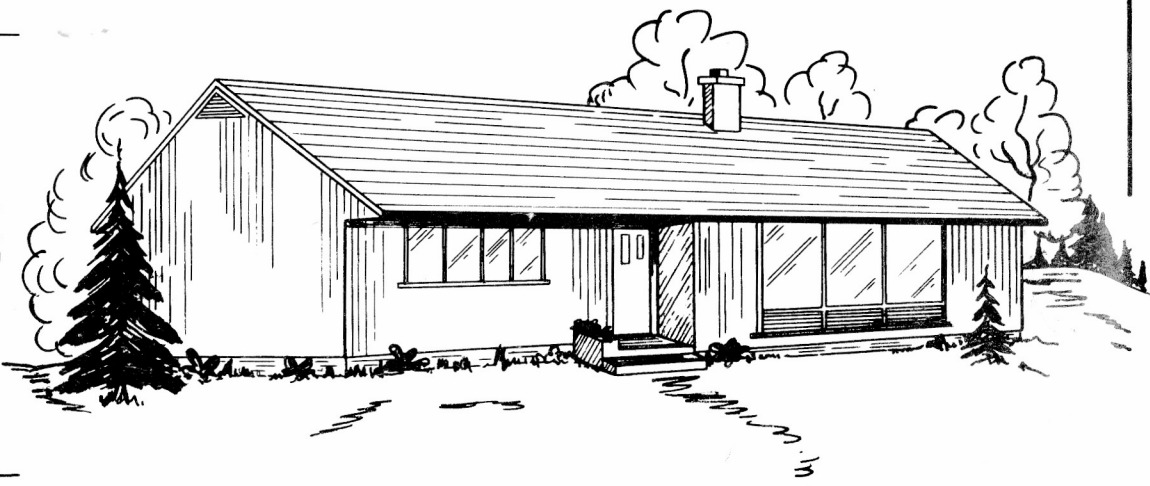
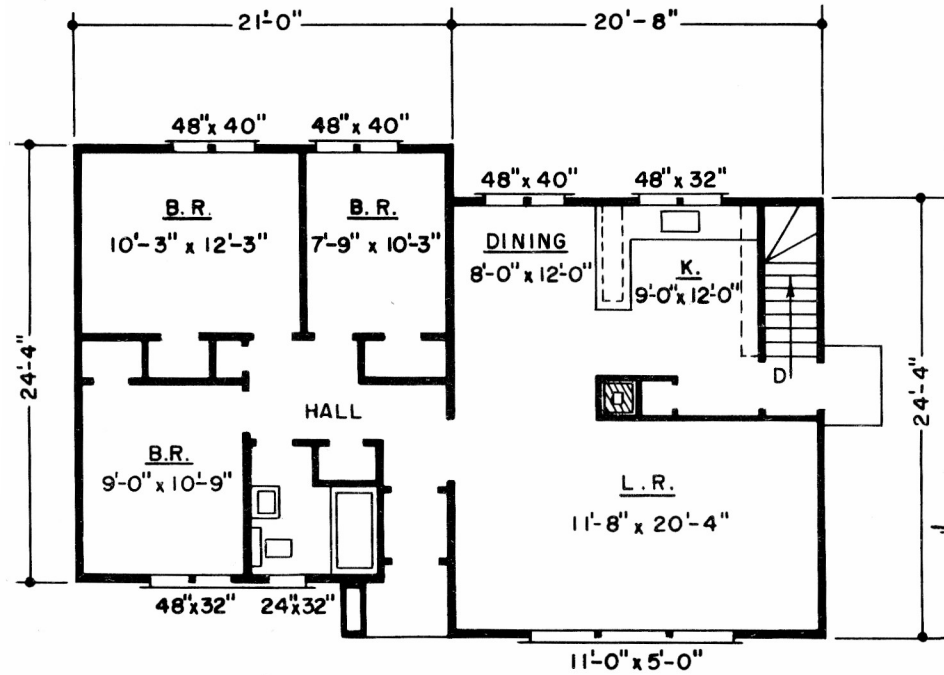


TYPE K-K HOUSE

DEEP RIVER  
TOWNSITE

SCALE  $\frac{3}{32}'' = 1'-0''$

AC-5428-A

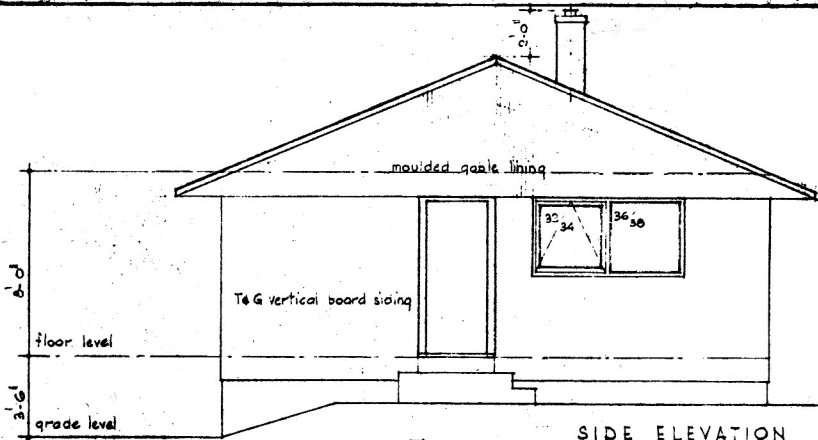


☐ TYPE L-HOUSE ☐

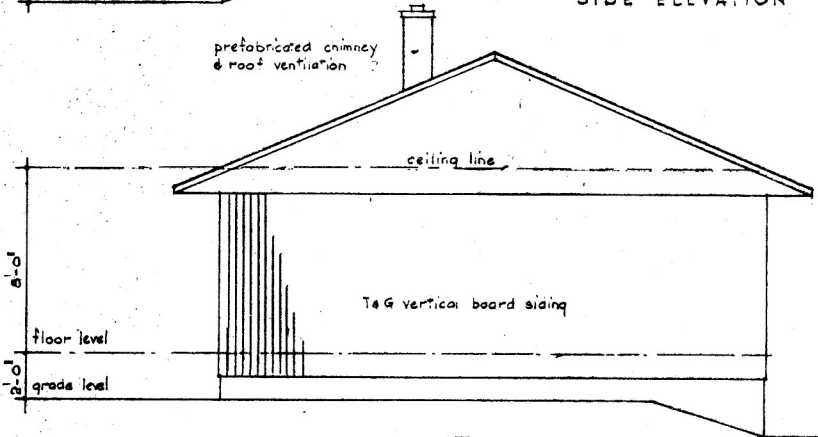
DEEP RIVER

SCALE -  $\frac{3}{32}$ " = 1'-0"

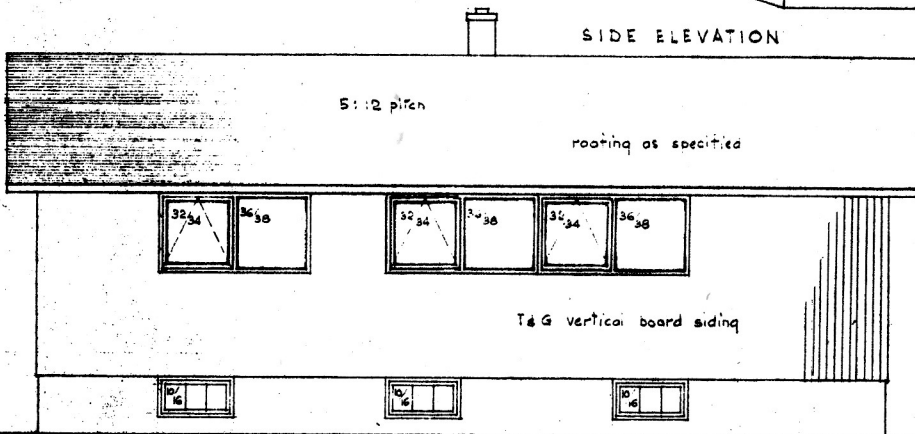




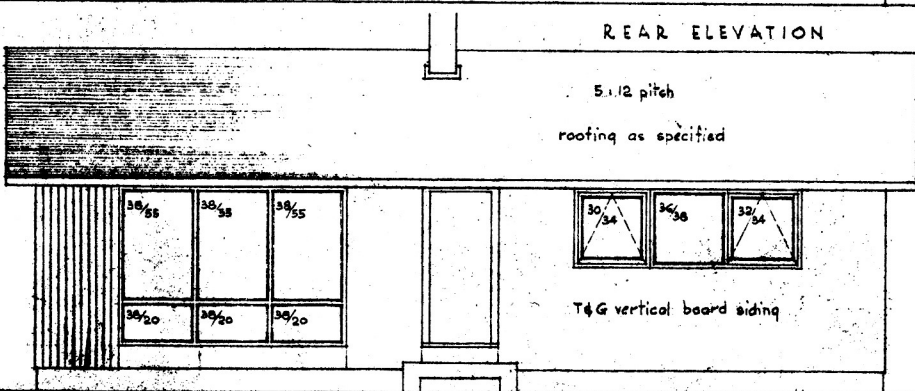
SIDE ELEVATION



SIDE ELEVATION



REAR ELEVATION

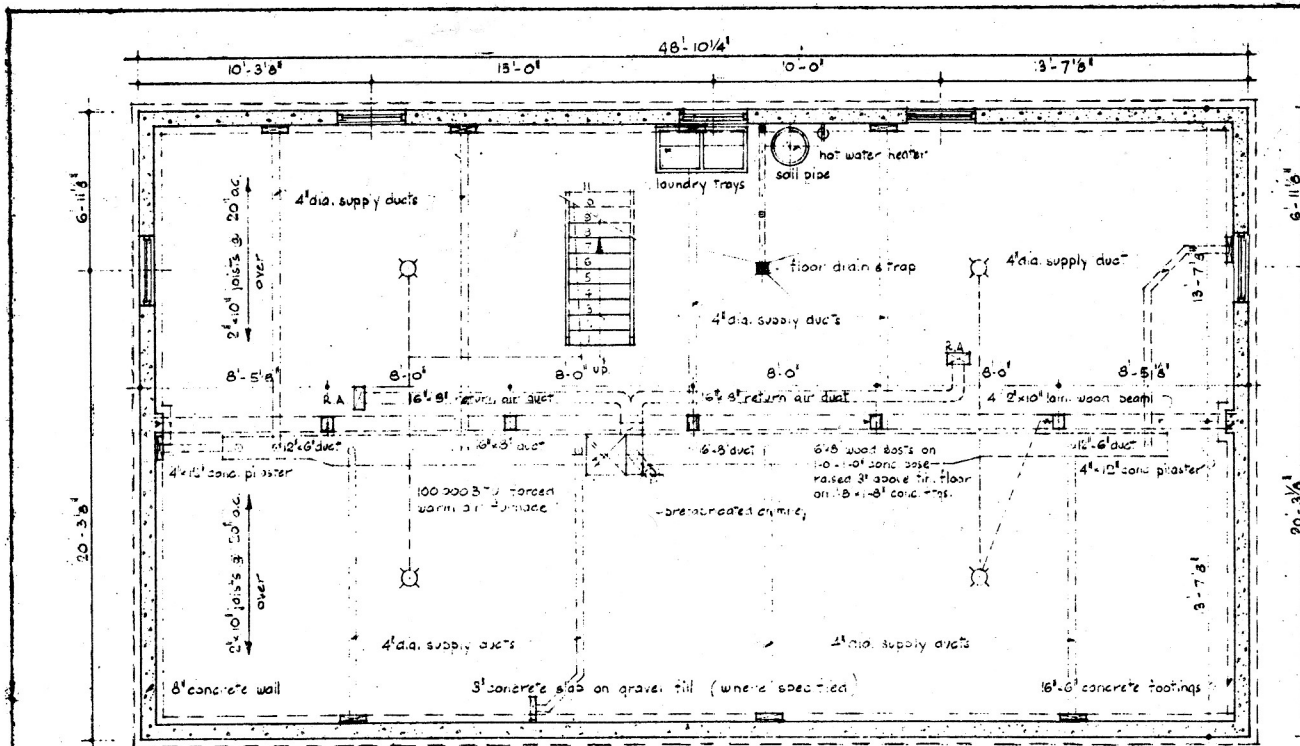


FRONT ELEVATION

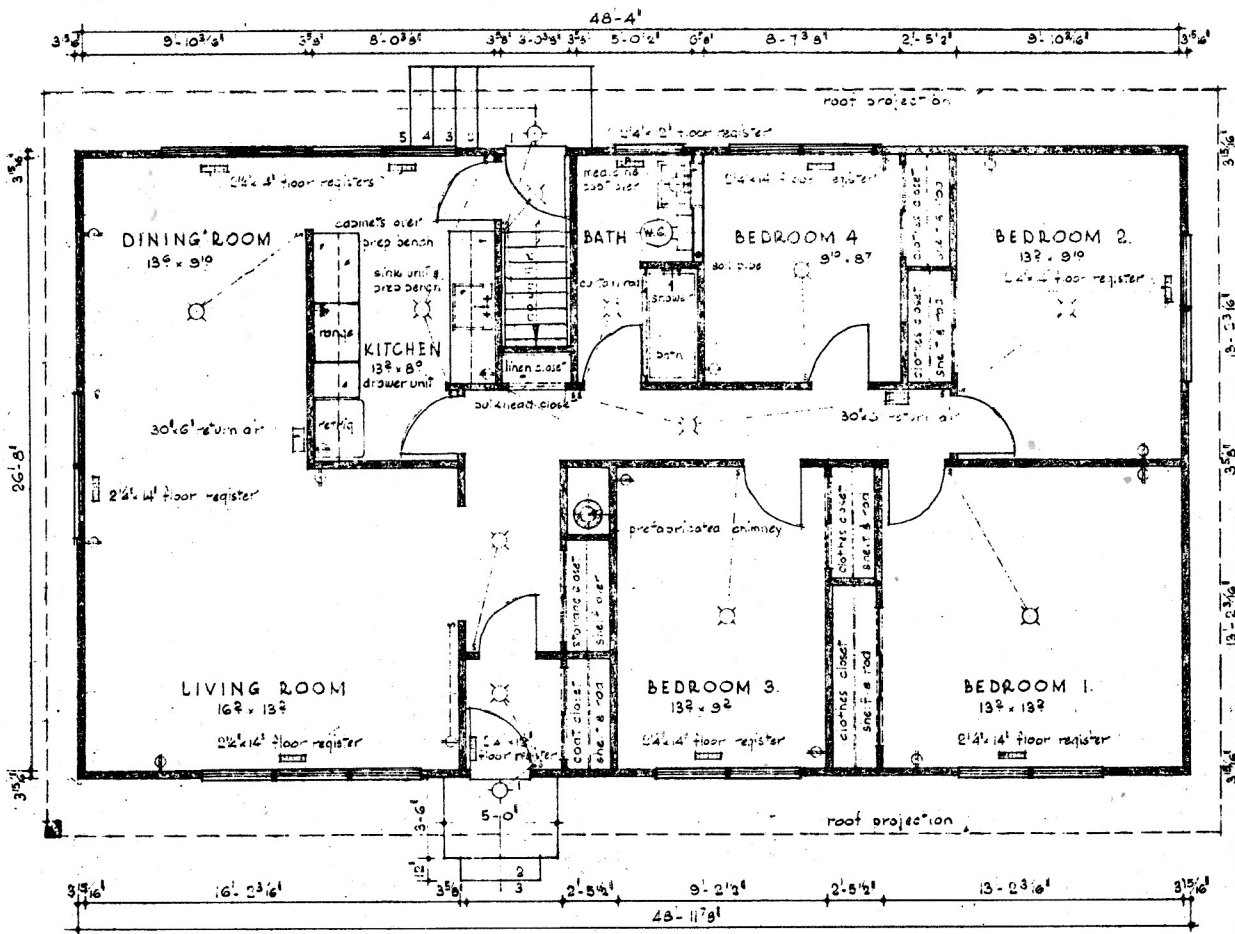
amended 3:4:57

T 9004	L3	300F	21: 2: 57	W/1016
--------	----	------	-----------	--------

P 12.570  
R 80



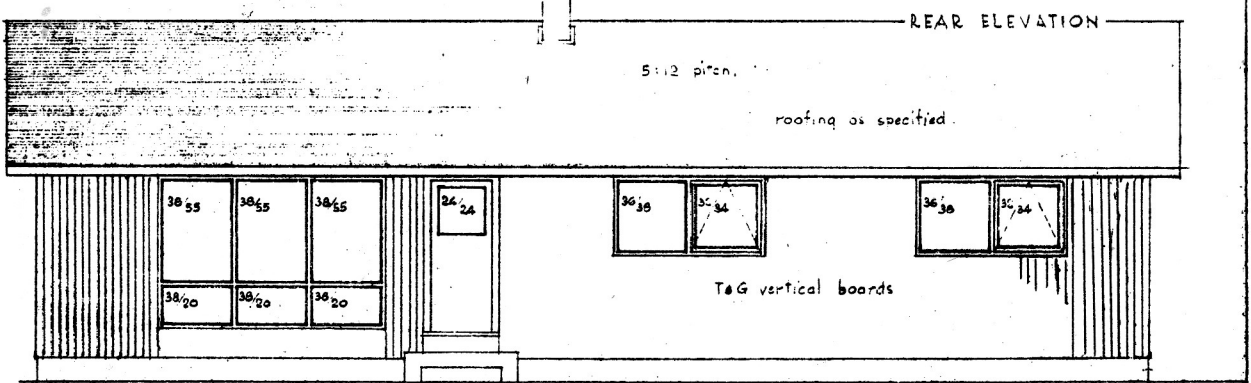
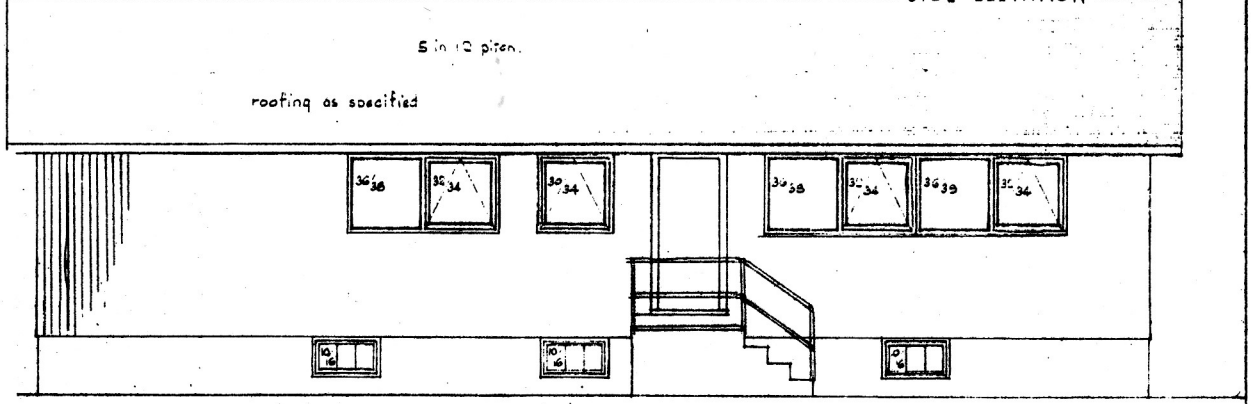
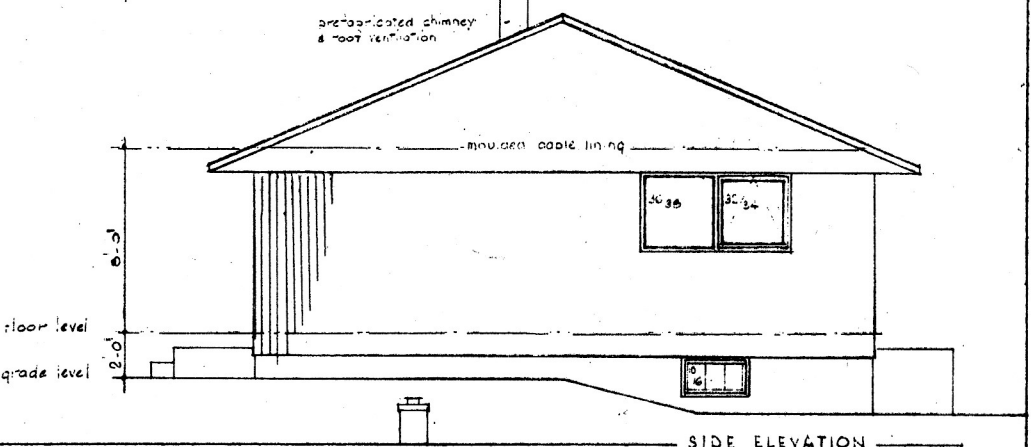
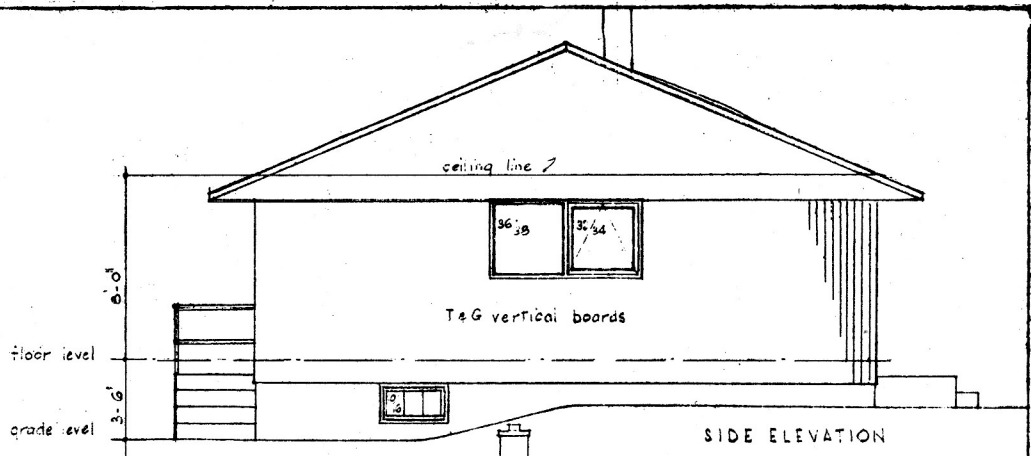
BASEMENT PLAN



FLOOR PLAN

BRAD INDUSTRIES LTD  
MONTREAL QUEBEC.

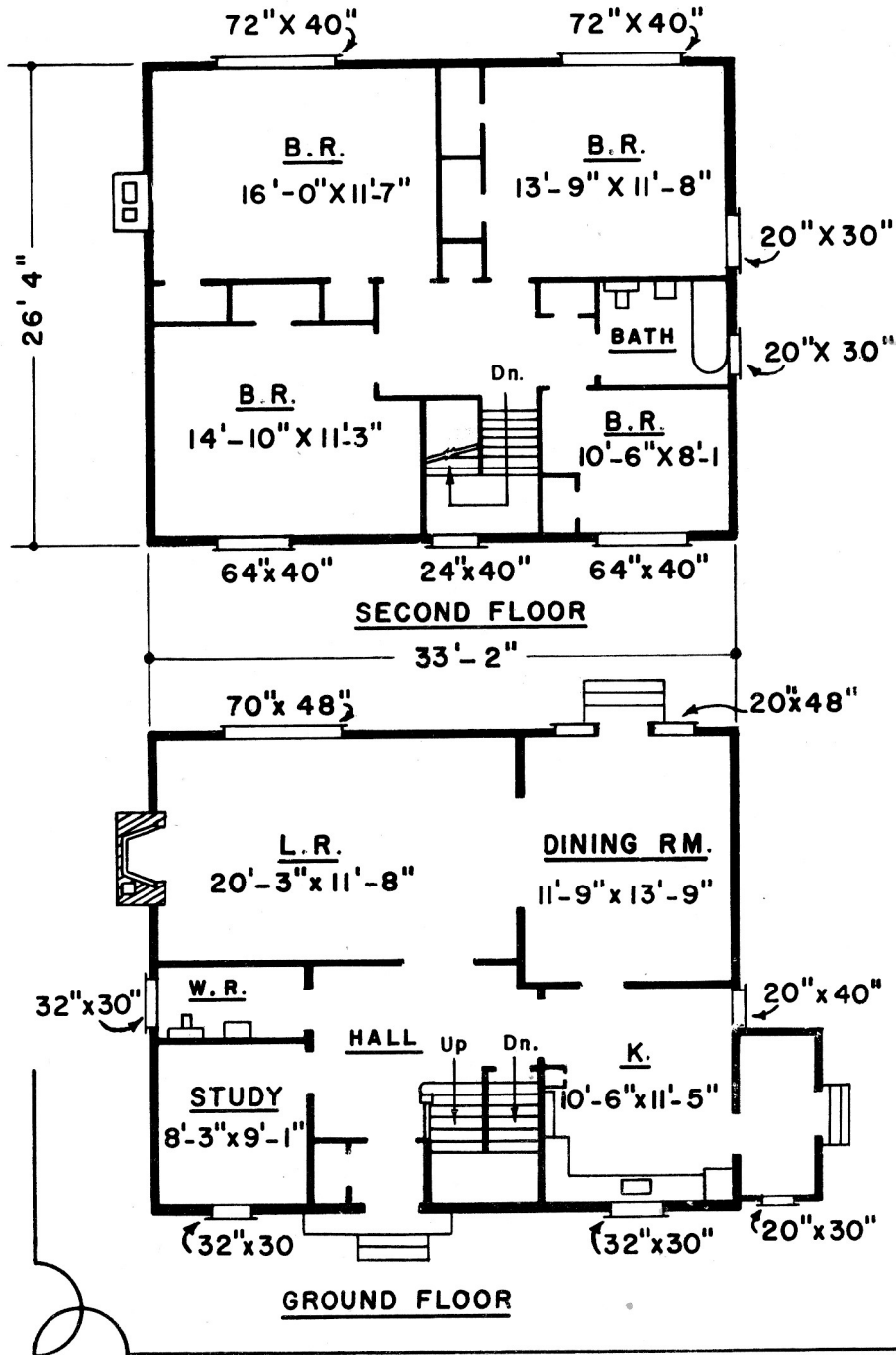
4 BED ROOM HO



amended 3/4/57.

SE CT. 4001	L4	4001	12: 8: 56.	W/1003
-------------	----	------	------------	--------

P15-000  
R102

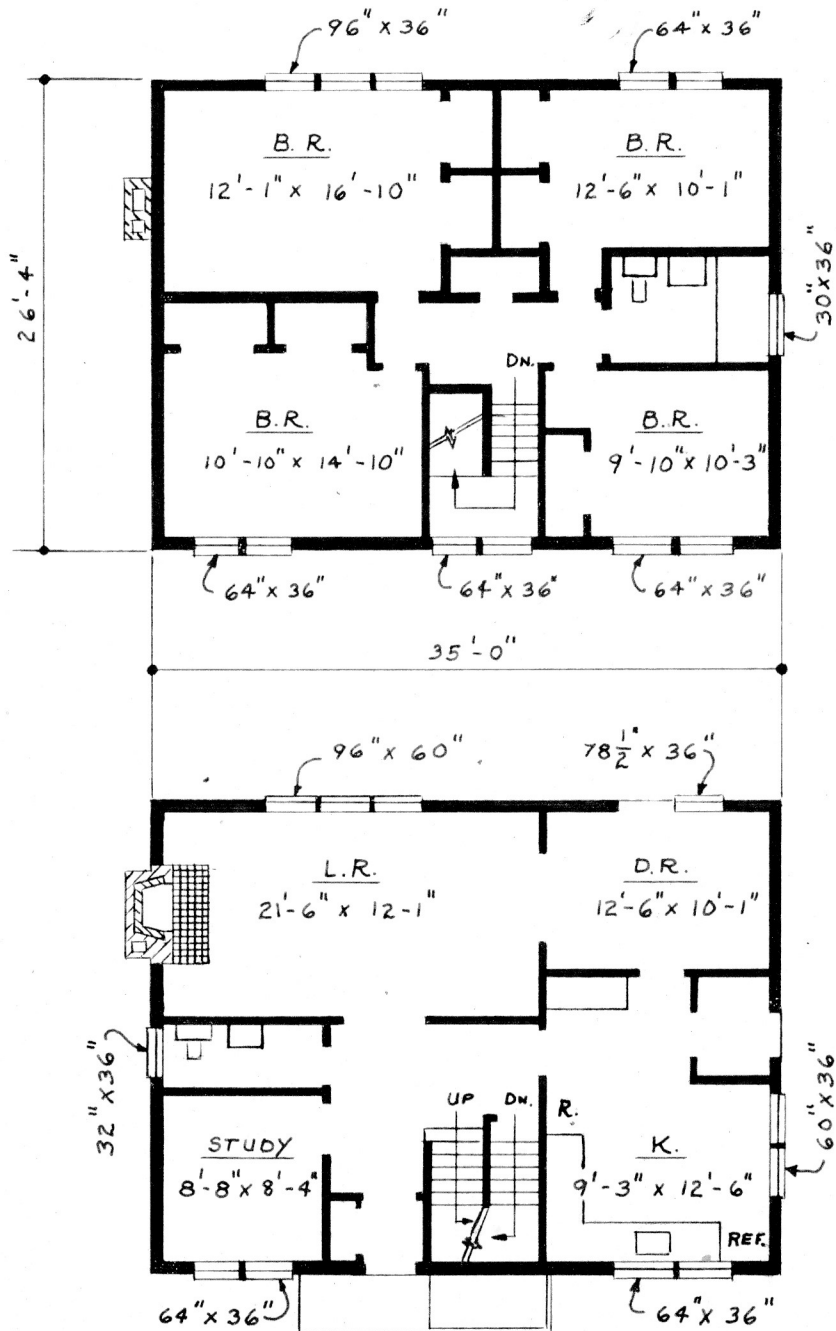


# TYPE "R" HOUSE

DEEP RIVER  
TOWNSITE

SCALE -  $\frac{3}{32}$ " = 1'-0"

AC - 5425 - A

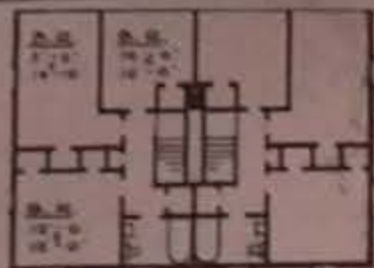


## TYPE R-1 HOUSE

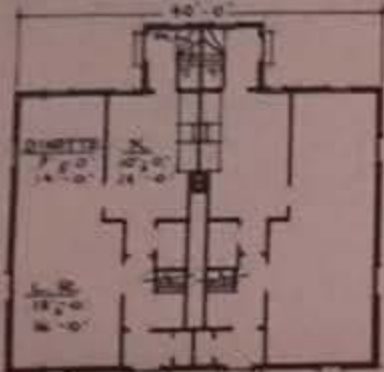
DEEP RIVER ONT.

SCALE -  $\frac{3}{32}'' = 1' - 0''$

AC-5495



SECOND FLOOR



SECOND FLOOR  
TYPE B-2

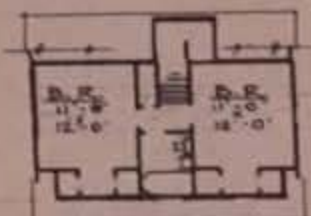
- ① YACHT CLUB MARINA
- ② BATHING BEACH
- ③ CANTEREN
- ④ STAFF HOTEL
- ⑤ SPORTS FIELD
- ⑥ YACHT CLUB
- ⑦ COMMUNITY CENTER
- ⑧ SCHOOL
- ⑨ SHOPPING CENTER
- ⑩ HOSPITAL
- ⑪ CATERERIA
- ⑫ TENNIS COURTS
- ⑬ SCHOOL
- ⑭ CHURCH



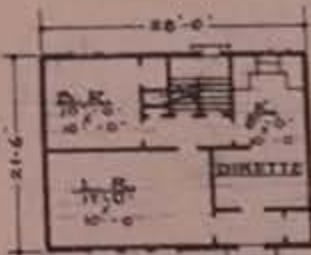
PLAN OF  
DEEP RIVER TOWNSITE



TYPE B-3



SECOND FLOOR



SECOND FLOOR  
TYPE B-3



TYPE B-2



LOCATION PLAN OF  
DEEP RIVER



TYPE  
B-2



SECOND FLOOR



TYPE B-2



GROUND FLOOR  
TYPE H-2



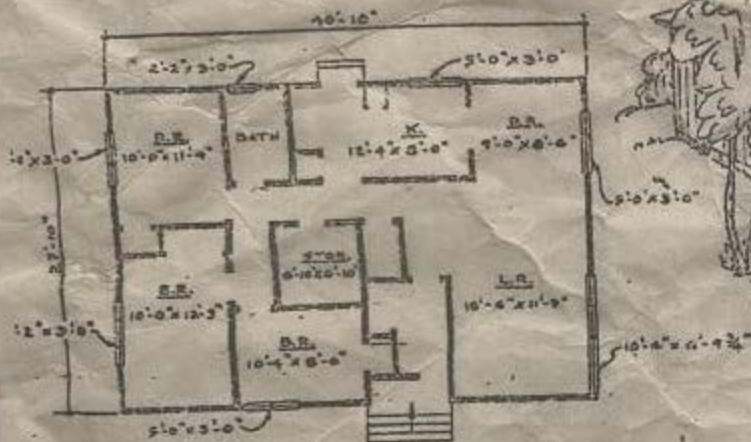
TYPE H-2



TYPE H-12



TYPE  
H-12



## TYPE 2 HOUSE

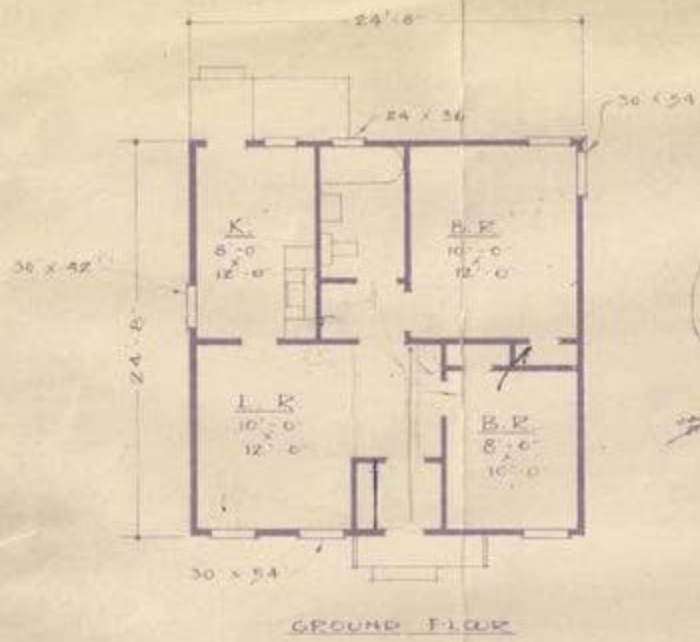
DEEP RIVER-ONT.

SCALE -  $\frac{3}{32}$ " = 1'-0"

BUILT IN 1953

R7 - 4 WALLS

R25 IN ROOF



• TYPE H-2 HOUSE •

DEEP RIVER  
TOWNSITE

SCALE: 1/2" = 1'-0"

AC-5056-A  
at Mansd.